

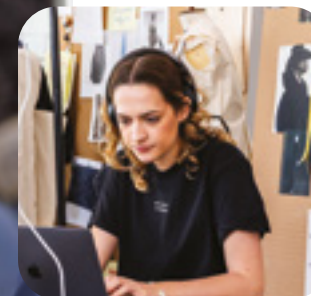
CONFIDENCE APPLIED

BATH SPA IS A UNIVERSITY THAT VALUES CURIOSITY AND CREATIVITY. WE'LL GIVE YOU THE TIME AND SPACE TO PURSUE YOUR PASSION AND LOOK TO THE FUTURE WITH NEW SKILLS, AND A GREATER DEPTH OF KNOWLEDGE.

We are a diverse community of people, what unites us is our respect for individuality, and our shared values around inclusivity, the environment, and our collective commitment to creating a sustainable future for everyone.

Through our work, we change lives, boost employability and upskill students of all ages so that they can grow the economy and address real-world challenges. This sense of togetherness is woven into the fabric of our campuses and state-of-the-art facilities, and there is a special place in this community for you.

Let us champion your ideas and support your ambitions.



BOOK AN OPEN DAY



Visiting us is a great way to see if we're right for you. Join us for course presentations, Q+A sessions and campus tours.

Click for details or visit:
bathspa.ac.uk/opendays



CONTENTS



5	HOW WE'LL HELP YOU ACHIEVE YOUR GOALS	41	OUR COURSES
7	POSTGRADUATE STUDY	43	• ART
9	TYPES OF STUDY	47	• BUSINESS AND LAW
13	BATH MEANS BUSINESS	71	• DESIGN
15	CAMPUSES - NEWTON PARK	77	• EDUCATION
17	CAMPUSES - LOCKSBROOK	99	• MUSIC AND PERFORMING ARTS
19	CAMPUSES - LONDON	119	• TEACHER TRAINING
21	YOUR FUTURE	127	• WRITING, PUBLISHING AND HUMANITIES
23	PURSUE YOUR PASSION	141	NEXT STEPS
25	POWER YOUR AMBITION		
27	OUR INSPIRING STAFF		
31	PAYING FOR POSTGRADUATE STUDY		
33	STUDYING AS AN INTERNATIONAL STUDENT		
35	OUR WORLD		
37	STUDENT WELLBEING		
39	OUR STUDENTS UNION		

HOW WE'LL HELP YOU ACHIEVE YOUR GOALS

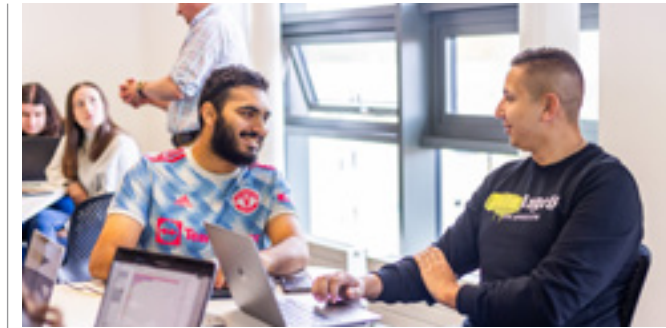
Here at Bath Spa University, we have a growing reputation for innovative thinking, and a history of imparting our students with industry-ready skills.

As a postgraduate, we'll challenge and support you, encourage experimentation and collaboration, and provide the perfect environment for you to study, live, and thrive.



LOCATION

Bath is a world-famous, beautiful and unique UNESCO World Heritage city, just one hour and 20 minutes from London by train and an hour's drive-time from Bristol airport. And it's one of the safest places for students in the UK. Our campuses are at the heart of a thriving region with cutting-edge business, and a rich artistic, creative and cultural scene.



FACILITIES

Picturesque grounds combined with modern, technically brilliant facilities - from state-of-the-art teaching and social spaces to specialist subject facilities.

SUPPORT

We're here for you. As a student, you'll have access to professional guidance and support around accessibility, disability, wellbeing, mental health and more. You'll be able to make the most of your time at university, knowing we've got your back!

CREATIVE CAMPUS

As an Adobe Creative Campus, BSU students have free access to the entire Adobe Creative Suite.

Becoming part of our community means access to a vault of industry-leading apps, including Photoshop, InDesign, Adobe Express and more.

We understand the importance of digital literacy, and you'll learn how to use Adobe apps to enhance your creative practice. From the moment you join BSU, you'll have the space to develop a wealth of indispensable skills you can use in and outside of the classroom.



Click to play our video about being an Adobe Creative Campus:

TEACHING EXCELLENCE

Bath Spa has been awarded 'Silver' overall in the Teaching Excellence Framework. This is a testament to our efforts to deliver excellent programmes of study, support services, spaces and facilities that enable a very high-quality experience for our students.

COMMUNITY

We're small enough to focus on every individual, but large enough to have a thriving community with lots going on. Our academic staff are experts in their fields of study, friendly, inspiring and superb researchers. The collegiate communication between students and staff is a big part of the BSU experience.

TAILORED STUDY

There are three ways to study – taught, research and PGCE. Whether you're focused on generating sector-leading thinking, learning from industry experts or passionate about education, you can choose the postgraduate course that's right for you.

AN EXCITING FUTURE

Whatever your age or background, postgraduate study is the beginning of the next phase of your career. With skills-based courses, leading academics, and top of the range facilities, we're here to put you on track to achieve your future goals.

POSTGRADUATE STUDY

A postgraduate degree at Bath Spa gives you the time and space to pursue your passion and look to the future with new skills and depth of knowledge.

More than just about standing out as a job candidate, postgraduate study enables you to open doors academically, expand your mind and become a leader in your sector.

“**BATH SPA UNIVERSITY WAS A PLATFORM THAT GAVE ME THE CONFIDENCE TO PUSH BOUNDARIES, WITH THE AID OF SOME AMAZING TUTORS.**”

Kamal Ali
MA Design (Textiles) graduate



INVEST IN YOUR FUTURE

Whether you're joining from your first degree, or getting back into education after years in industry, a postgraduate degree is a great investment. Latest Government figures show postgraduates earn £5,000 more every year, and access higher-skilled jobs too.*

*Graduate Labour Market Statistics 2023



SATISFY YOUR CURIOSITY

Do you have burning questions, or subject matter you want to delve deeper into? This could be your opportunity to discover and experience more, alongside our community of inquisitive postgraduate students.

CHOOSE YOUR PATH

A postgraduate degree may be required for the career path you've chosen, or you might be considering it to give you the confidence to change directions. We'll support you to take the next steps to becoming that confident professional, whatever your ambition.

BECOME A THOUGHT LEADER

Through your study you'll connect with some of the brightest minds, whether that's in a lecture theatre, seminar or networking event. Share your passion and see where it could take you.

HAVE COURAGE TO EXCEL

Choosing to study a postgraduate degree takes determination and courage; balancing your personal life and your career goals. Follow in the footsteps of our past and present students who have shown the same bravery and are forging their own path.



TYPES OF STUDY



A postgraduate degree usually requires an undergraduate degree for entry, but our students don't always follow the same route to study with us. You may be joining straight from finishing your undergraduate degree, after years of industry experience, or with no first degree.

To be considered without an undergraduate degree, you must demonstrate considerable relevant experience and may be asked to attend an interview.



See our Accreditation of Prior Learning (APL) web page to learn more.

TAUGHT

Our taught courses offer a familiar academic structure to undergraduate degrees, with lectures, seminars, and both group and independent projects.

Helmed by experienced and supportive academics and specialists, we'll help you to expand your own ideas and professionalise your practice and thinking.

- Usually 1 year full-time, or more if part-time
- Variety of core and optional modules
- Usually awarded as an MA, MBA, MSc or PgDip

RESEARCH

A research degree, such as PhD, EdD or MPhil, focuses on independent study, developing new ideas and understanding in the context of existing knowledge. You'll achieve this through your own initiative, planning, gathering of information, innovation, and analysis.

We offer university-led research degrees, defined and supported by our world-class academics, and student-led research degrees, which are defined by you and your chosen topic.

PGCE

A postgraduate certificate in education (PGCE) is one of the most popular teacher training qualifications enabling you to teach at primary or secondary level. At BSU, we've been training the next generation of teachers for over 75 years, combining in-school training with academic study. Our vision is clear – to offer the very best training experience to ensure your success as a teacher.

- 1 year full-time study
- Choose from 16 secondary subjects, or three primary and early years routes
- Spend a substantial amount of your training in schools





YOUR BSU



BATH MEANS BUSINESS

Bath is well known for its historical significance and stunning architecture, but it's also a strong, diverse economy full of industry. We prioritise collaboration and enterprise, forming links with local, national and global businesses to help our students build lasting connections.



CREATIVE AND INSPIRATIONAL

Home to creative industries in music, theatre, arts and more, Bath is the perfect place to continue your journey as a professional creative or entrepreneur. As a UNESCO World Heritage City, Bath is full of culture for you to take creative inspiration from, as well as museums, historical sites, and stunning green spaces. The university has strong relationships with local arts organisations, including Bath Festivals and the Holburne Museum.

SUPPORTIVE

Our enterprising students have access to our co-working space at The Studio, which provides research, enterprise, and innovation space for local microbusinesses and creators. With continued access after you graduate, you'll be able to work on creative projects alongside students and academics. You can also use our dedicated careers support, in person and online, throughout your studies and for three years after graduation.

INDUSTRIOUS BATH

Bath sits within the dynamic West of England region, renowned for its diverse industrial landscape. The city is home to a mix of large, established companies and innovative start-ups, spanning sectors including engineering and technology as well as creative and media industries. There are many opportunities for professional growth in the unique environment that Bath provides, no matter what industry you want to grow into.

WELL-CONNECTED

With direct rail connections to London, Cardiff and Bristol, Bath is incredibly well-connected. Bristol Airport is less than an hour away, providing students with a world of opportunity. We have great links in and around the city too, with businesses ranging from local to world leading organisations in education, food and drink, publishing and more!



Click for tour.

NEWTON PARK



Set in acres of idyllic English countryside and surrounded by rolling farmland, our Newton Park campus is just minutes from Bath city centre. With excellent facilities and a blend of the traditional and the modern, it's a tranquil, reflective and safe place to learn and live.

15 

minutes on regular bus service to Bath city

KEY FACTS

- State-of-the-art facilities and a historic past
- Fifteen minutes on regular bus service to Bath city
- Close to cycle path between Bristol and Bath

KEY FACILITIES

- Commons building with television studios, Apple Mac suites and communal study space
- University library
- Science laboratories
- Students' Union building with gym, shop, bar and kitchen
- University theatre, dance and performance studios
- Newly refurbished Music facilities, including recording studios, rehearsal rooms and Listening Pods, as well as a 40-seat sound theatre with Dolby Atmos

WHICH COURSES ARE BASED AT NEWTON PARK?

Courses including business, humanities, film and TV and performance are taught at Newton Park, but please check the location information on each course page for specific details.



“YOU ARE NOT GOING TO FIND A MORE BEAUTIFUL CAMPUS IN THE REST OF THE UK.”

Sam Lawton,
School of Sciences graduate



Explore
Click to find out more about our campuses online.

LOCKS BROOK



Buzzy and innovative, with open plan social areas, flexible studio spaces, and technical workshops. Locksbrook campus is located in the heart of Bath’s industrial quarter. This RIBA award winning building is a former furniture factory, now home to the School of Art, Film and Media and the School of Design. It has been lovingly repurposed as a creative space for students to come together, find inspiration, design, do and create.

10 
minutes on regular bus service to Bath city

KEY FACTS

- Open-plan and collaborative
- On-site Cafe
- Grade II listed building
- RIBA South West and RIBA National award winning building
- Cycle path to Bath city centre and regular bus services

KEY FACILITIES

- Workshops for art and design courses including ceramics, metalwork, print and screen printing, textiles and more
- Permanent gallery space displaying student and alumni work
- Art shop for materials
- Social areas and open-access computer facilities

WHICH COURSES ARE BASED AT LOCKSBROOK?

Courses from the School of Art, Film and Media and School of Design are taught at Locksbrook, but please check the location information on each course page for specific details.



Explore
Click to find out more about our campuses online.



“ I REALLY LIKE THE IDEA OF COLLABORATING WITH OTHER STUDENTS AND THAT YOU CAN USE ALL OF THE SPACES. YOU’RE NOT JUST CONFINED TO YOUR OWN LITTLE SPACE.”

Anna Drust,
Bath School of Design student

LONDON



Bath Spa University London (BSUL) - our new, business-focused teaching site set in vibrant Hackney, East London.

Studying at our London site can be a career defining moment. With a key focus on your employability, we aim to provide you with access to a host of potential employers and careers. We encourage our students to think big, outside of the box. Our friendly academic guidance, top facilities, and great location will equip you with the knowledge, opportunities, and skills you need for a successful career.

KEY FACTS

- Easily accessible via Hoxton and Shoreditch overground stations, as well as the bus and tube
- Green spaces, bars, restaurants, shops and theatres close-by
- Vast career and networking opportunities in greater London

WHICH COURSES ARE BASED AT BSU LONDON?

Students at BSU London study on a range of Business and Management courses, from undergraduate to postgraduate, as well as Health and Social Care Management. Please check the location information on each course page for specific details

FLEXIBLE STUDY

Our flexible timetables allow you to fit full time study around your other commitments by studying two full days a week or three-four evenings a week.

INSPIRING TEACHING

Our teaching is interactive, practical and engaging, and you'll benefit from the deep knowledge and industry experience of our academic staff.

DYNAMIC LEARNING

Our students are diverse with a mix of backgrounds, ages and life experiences, giving you a dynamic peer-to-peer learning experience.



Explore

Click to find out more about our London campus.



“STUDYING AT BSU LONDON GAVE ME THE CHANCE TO DEVELOP MYSELF ENORMOUSLY PERSONALLY AND PROFESSIONALLY. THE TEACHING IS ALWAYS ENGAGING WHILE THE COURSES HAVE QUALITY CONTENT, AND WE ALWAYS HAVE EXTRA SUPPORT AVAILABLE IF NEEDED.”

Roxana Pitaru
BSU London student

YOUR FUTURE

At Bath Spa, we're here to champion you as you continue to develop your talent and skill. Our dedicated Careers and Employability Team are ready to support you in person or online to take the next step.

Links with industries

Our lecturers and tutors have excellent links with industry professionals and experts to make sure they're teaching the most up-to-date skills you'll need for future employment. They work closely with employers and industry partners to provide on-course opportunities, from real world scenarios to work-experience.

Skills development

Our Skills Essential activities, which run alongside your studies, include workshops, podcasts, events, and career planning appointments. Employers are also regularly on campus from diverse industry sectors to give you the opportunity to find out more about work experience, part-time jobs and graduate careers.

Graduate support

Our graduates are inherently creative, with almost a quarter of graduates heading into some form of professional enterprise after graduation. This can include self-employment, freelancing, and start-ups. If you're interested in exploring your entrepreneurial spirit, there's a tailored program of support through the Careers and Employability Enterprise team, with 1-2-1 coaching, workshops, and events.

Our **Emerge Creative Graduate Studio** provides a unique residency model for our graduates to use a studio or desk, as well as ongoing professional support. We have a range of graduate creative practitioners, freelancers and business start-ups working across disciplines here.



“EMERGE PUT ME IN CONTACT WITH THE COMPANY THAT I NOW WORK FOR, ALONGSIDE MY ARTISTIC PRACTICE; IF IT WASN'T FOR EMERGE, I WOULDN'T BE IN THAT POSITION.”

Tallulah, BA and MA (Hons) Fine Art graduate



Click to play our video about the Emerge Creative Graduate Studio:



“I have access to great facilities and a really nice community at Emerge. They are hands on and ready to help people; you get that continuous support as a graduate so you don't feel lost after graduating. Emerge put me in contact with the company that I now work for, alongside my artistic practice; if it wasn't for Emerge, I wouldn't be in that position.”

Tallulah, BA and MA (Hons) Fine Art graduate

The Studio in Bath provides a collaborative space for students, academics, graduates and local micro-businesses to work on projects and focus on creativity.

Our **Graduate Support Unit** will also be available to you while you study, and after. You'll have access to support to find a job, local opportunities in and around Bath, events designed to help you connect with industry, and workshops to boost your skills.



PURSUE YOUR PASSION

Master's graduate Rosie Yates found her own illustration style and turned her dream into a full-time reality.

Since graduating in 2021 with her MA in Visual Communication, Rosie has established herself as a successful freelance artist, working on many projects, including several with BSU.

Rosie's work predominantly surrounds digital illustration techniques, using uplifting colours and adding subtle hidden details for those with keen eyes to find.

In her most recent work for BSU, Rosie has been using her creative flair in designing map-related illustrative assets to be used on postcards, tote bags and printed maps for BSU recruitment events, such as Offer Holder Days for our prospective undergraduate students.

Her latest project work is a large, panoramic view of the 'Bath Skyline', encapsulating all the major landmarks and smaller treasures found in and around Bath. Ideal for students not familiar with what Bath has to offer.

Not only is she blazing her own trail creatively, but she has also undertaken two associate lecturer roles, curating and delivering drawing modules to undergraduate Graphics Communication students at BSU.

Rosie credits her tutors for their support in enabling her to find the confidence to pursue her passion, as well as pushing her out of her comfort zone.

“MY TUTORS PROVIDED ME WITH PORTFOLIO GUIDANCE, AND I WAS RECOMMENDED FOR ILLUSTRATION JOBS FOR CLIENTS I STILL WORK WITH NOW!”



If you're just starting out your career in the creative industry, Rosie had some words of advice: *“Be brave in what you are making and make use of as many resources within the university as possible.”* As a student based at our Locksbrook campus, Rosie was able to utilise all the workshops we have available to our students, from laser cutting and etching to digital and 3D printing. The convenience of this helped her to identify her style and define her own way of making and thinking, building her confidence to commit to being a freelance creative.

Rosie now resides in her own studio space in Derbyshire, but hasn't left her Bath roots behind. *“I am fortunate that connections I made from my time in Bath are still continuing now, and I am working on lots of exciting projects that are South West based! Having my own studio space felt so out of reach for so long, so to finally be in a space that is my own still doesn't quite feel real- and I feel so lucky to be here!”*

“My tutors provided me with portfolio guidance, and I was recommended for illustration jobs for clients I still work with now! I also learned a lot of skills through the technicians, in particular when working on print projects, they really helped me to format my creative ideas and taught me skills within software, such as Adobe Illustrator and Photoshop.”

While studying, I worked on projects alongside my tutors, so when I was asked to join as an associate lecturer, I felt confident that I could teach with their support. This was an absolutely fantastic opportunity, I loved being able to share my illustration skills with students and visit amazing drawing spots around Bath. Having not taught before, it really pushed me out of my comfort zone.”

POWER YOUR AMBITION

MA Commercial Music graduate Amy Sergeant receives the coveted Music Producers Guild Rising Star award 2024.

“I LOVED MY TIME AT BSU. THE OUT-OF-CITY SETTING SUITED ME AND IT WAS A COMFORTABLE AND CALM SPACE TO BE CREATIVE.”



Bath Spa University graduates stand out by being creative in their industries, and Amy Sergeant is no exception. After studying the integrated MA programme, Amy moved to London in 2021 and became an active member of the Music Producers Guild (MPG).

Since graduating, Amy quickly progressed from assisting sessions for big names such as Florence and The Machine and The Vamps to engineering across some of London's biggest studios, namely Miloco and Metropolis for producers such as Rodney Jerkins, Mark Crew & Hugo White.

The award, which reflects Amy's hard work, drive and ambition is awarded by the MPG and recognises early talent on track to becoming industry leaders. Harnessing the skills learned at university, Amy is forging her way in a competitive creative industry and finding her place among exciting up-and-coming music professionals.

When discussing her time at BSU, she highlighted the creative environment that the university is known for, as well as the support she received during her time as a student.

"I loved my time at BSU. The out-of-city setting suited me and it was a comfortable and calm space to be creative. Throughout the course, there were a variety of modules with different skills to learn and at the same time there was flexibility to tie in some modules with the freelance career I was building."

She also highlighted the variety of the Commercial Music course, which spans performance, songwriting, production and business, allowing her to specialise in production.

As a university, we have recently completed a £2.5 million investment to enhance our specialist facilities at Newton Park campus for our Music courses. This includes upgrades to our recording studios, rehearsal rooms and listening pods. We have also added additional new spaces including a 40-seat sound theatre with Dolby Atmos, allowing our students to explore their creativity to the fullest potential.

OUR INSPIRING STAFF

We're a community of educators, makers, entrepreneurs, thinkers, innovators and leaders. Our students, staff and alumni create and achieve amazing things, and with us, you can too.

As experts in their fields, the work our academics do has a real impact on the way we teach and the world we live in. They spend a proportion of their time conducting research and extending their own professional practice, which helps shape how we teach you.

We're very proud of their achievements, here are a few recent examples of their dedication and excellence.



Photo by Fashion Roundtable

DEFENCE SIMULATION, EDUCATION AND TRAINING (DSET) LIFETIME ACHIEVEMENT AWARD

John Curry, Senior Lecturer in Creative Computing, has been awarded the DSET Lifetime Achievement award for his contribution to serious games and academic excellence. John has been a key player in the serious games industry for the last two decades, building and running video games to inform decision making.

From recounting tales of taking down hackers in cyberspace to advising organisations on cybersecurity and delivering virtual lectures in Washington DC, John's work keeps him well-informed on the cyber landscape and primed to come head-to-head with cyber criminals.

"I am humbled, as I am very aware that my contribution, such as it is, is always based on the work of others. I am also aware that future researchers will build on my efforts and supersede them. Research is not the end process. All we can do is help inform the work of those who follow us."



John Curry

UNITED NATIONS SUSTAINABLE FASHION PANEL CHAIRED BY BATH SPA PROFESSOR

Professor of Fashion and Sustainability and founder of Fashion Roundtable, Tamara Cincik, stood shoulder to shoulder with fashion experts from around the UK as part of United Nation's Fashion Sector Exchange.

The event was held to gain a better understanding of current sustainability issues, hear best practices from businesses that are ahead of the curve, and inspire action. Professor Cincik chaired the 'Next in sustainable fashion: getting ahead of the curve' panel with esteemed colleagues from the industry, including Baroness Lola Young of Hornsey and designer Rahemur Rahman.

Professor Cincik has over 20 years' experience working in the fashion industry as a fashion editor, brand consultant and in the Houses of Parliament. In 2017, she launched Fashion Roundtable, the only think tank for the fashion and textiles industry.

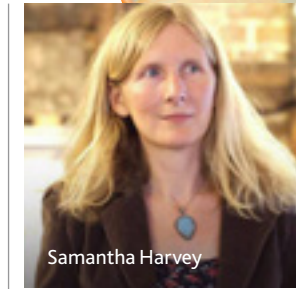
Now, as BSU's Professor of Fashion and Sustainability, she is helping to bring The National Centre for Fashion and Sustainability to the fore.

The National Centre for Fashion and Sustainability is a space where leading thinkers, learners, businesses and communities connect and drive the fashion and textile industry toward new, regenerative practices that are healthy for people and the planet.



Explore

Click to find out more about the National Centre for Fashion and Sustainability.



Samantha Harvey

BOOKER PRIZE SHORTLIST FOR BSU LECTURER

Samantha Harvey, Reader in English and Creative Writing, has been shortlisted for the prestigious Booker Prize 2024.

Renowned as one of the UK's most prestigious literary awards, the Booker Prize features the most impressive works of sustained fiction. Each year, the prize is awarded to what is, in the opinion of the judges, the best sustained work of fiction written in English and published in the UK and Ireland.

Sam's novel, *Orbital*, published in 2024, is her latest work of fiction and has made a significant splash in the world of literature. Author of five novels and a work of non-fiction, her novels have been shortlisted for the Orange Prize for Fiction, the Guardian First Book Award, the Walter Scott Prize and the James Tait Black Prize, and longlisted for the Booker Prize, the Baileys Prize, the Jerwood Fiction Uncovered Prize and the HWA Gold Crown Award.

Sam has won the Staunch Book Prize for *The Western Wind* and taken home the AMI Literature Award and the Betty Trask Prize for *The Wilderness*.

Reflecting on her recent shortlist success, Sam said:

"There's something unarguably brilliant – if astonishing – about reaching this shortlist. I could never have expected it; so many stars have to align for a novel to occupy one of those six hallowed places, and each morning I wake up, remember that my novel is one of those six, and feel newly amazed."

“BATH SPA’S A FRIENDLY PLACE WITH PASSIONATE STAFF AND THERE ARE LOTS OF OPPORTUNITIES FOR PROFESSIONAL DEVELOPMENT. OH, AND OF COURSE THE CAMPUSES ARE BEAUTIFUL.”

Pippa, MA Arts Management graduate



PAYING FOR POSTGRADUATE STUDY

A Master's takes your knowledge and skills to the next level and is a big investment in your future. Find out what our course fees are and how you can get help to pay for them. Don't forget you may be able to study flexibly so you can earn while you learn.

WHAT WILL I PAY FOR?

The cost of a full-time Master's degree for a UK student studying at Bath Spa University in the 2025/26 academic year ranges from £8,985-£9,950. You'll also need to cover living, travel and other study expenses.

Tuition fees

Postgraduate courses are usually one year long, or two years part-time. The tuition fee for Master's students varies depending on the price band. Fees for 2025/26 are:

- Band 1** – £8,985 (classroom-based fields)
- Band 2** – £9,925 (laboratory/studio-based fields)
- Band 3** – £9,950 (Bath School of Art, Film and Media and Bath School of Design)
- PGCE** – £9,250

There are other Master's programmes that have fees outside of these bandings, it is advised that you check tuition fees on the course pages of the website.

Other expenses

While you'll need to consider the usual expenses – accommodation, travel, groceries, living, etc. – you should also think about costs associated with course-specific books, stationery and printing. You may need to pay for field trips, art materials and specialist equipment for some courses. Another big factor will be the funding of any research work for your Master's.

There is financial support available for postgraduate students at BSU such as funding, scholarships and bursaries.

LOANS AND FUNDING

Alumni Scholarship

If you studied for your undergraduate degree here at BSU – even if it was a long time ago – you may be eligible for a Postgraduate Alumni Scholarship. The scholarship is available to any Bath Spa graduate (Undergraduate or PGCE/ PGDE) progressing onto a Taught Master's Degree (e.g. MA, MSc, MRes) for the 2025/26 academic year. The scholarship of £2,000 will be applied as a tuition fee waiver.

Government loans

For Master's study, if you're a UK resident, you can apply for a Postgraduate Master's Loan to help with course fees and living costs.

You can apply for a postgraduate loan if:

- You're studying your first taught or research Master's course
- It is a full Master's course - This technically means a level 7 qualification worth 180 credits
- You're studying at a university or college, or by distance learning
- You're under the age of 60 on the first day of your course.

It's important to know that you can borrow the full loan amount, even if your course costs less. Students starting their course on or after 1 August 2024 received £12,471 from Student Finance England. The loan amount for courses beginning on or after 1 August 2025 will be announced in early 2025.

For PGCE study, if you're a UK resident, you can apply for a Tuition Fee and Maintenance Loan. The Maintenance loan is partially means-tested.



Explore
Click to find out more about student finance.

TIPS ON HANDLING YOUR MONEY

- Plan ahead! It's important to consider all the expenses coming out of your account each month.
- Make sure you get all the money you're entitled to. If you're not sure what you can get, the Student Wellbeing and Student Finance teams can help.
- Ask about part-time work at the University or in the city, but make sure to take time for yourself. You need time to study too.
- Don't ignore financial difficulties. Come and talk to Student Wellbeing before things become a problem – studentwellbeing@bathspa.ac.uk
- Check you aren't paying too much tax, especially if you are working part-time.
- It's always worth shopping around for better deals on bills. Use an online comparison site and do your research.
- You can still get student discount as a postgraduate student, invest in a TOTUM card, which is the official student discount card. You can also use UNIDAYS and Student Beans for online discounts.
- If you're new to Bath, do your research to find affordable places to live and socialise. A bus pass or student railcard could help you with travel, too.



STUDYING AS AN INTERNATIONAL STUDENT

Asia. North America. Latin America. Europe. Africa. The Middle East. Bath Spa is home to around 1,000 international students and every year we welcome new students from over 60 countries to our university. Wherever you're from, you'll soon be part of our friendly, vibrant community.



Graduates from UK universities are highly prized around the world. It's not purely about gaining a qualification. With us, you'll also learn valuable skills that employers want: independent and critical thinking, self-discipline, time and project management, as well as written and oral communication skills. Plus, as a BSU graduate, you will be part of a thriving alumni network that includes the creative thinkers, influencers and business leaders of tomorrow.

APPLYING

We're committed to providing a simple and effective application process. You can apply directly to the University from each course page on the website. If the course you are applying for requires an academic interview or an audition, and you're not able to attend in person, our Admissions team will support you in organising a phone or Skype interview. PGCE applications are handled through the Department for Education's Apply system.



Explore
Click to find out more about studying as an international student.

ENTRY REQUIREMENTS

We consider every application individually and accept a wide range of international qualifications. Please bear in mind that some specialist subjects may have specific entry requirements.

If your first language isn't English, you must have a recognised qualification to the following standard:

- IELTS 6.0-7.0 (including a minimum of 5.5 in all bands)
- Other recognised English language qualifications of an equivalent standard.

If you score less than these requirements, you will be asked to attend an English language course before starting your degree.

IMMIGRATION ADVICE

Our specialist Immigration Advisers can help and advise you with any of your immigration related questions. Our web pages are full of useful information about the different types of visas available.

Find out more www.bathspa.ac.uk/visas
Email the team immigrationadvice@bathspa.ac.uk

SUPPORT

As a globally connected university, we operate a network of international advisers and agents who will be happy to assist you and provide help with your application in your country. As part of our dedicated support service for international students, we'll welcome you at the airport and your halls of residence.

If you feel homesick or need some support managing your new life, our Student Wellbeing Services are here to support you in maintaining your wellbeing and mental health through your university experience.

Our English Language Unit offers free services to help you with your academic writing and communication. www.bathspa.ac.uk/elu

TUITION FEES

Postgraduate courses are usually one year long, or two years part-time. The tuition fee for Master's students varies depending on the price band. Fees for 2025/26 are:

- Band 1** – £16,625 (classroom-based fields)
- Band 2** – £17,835 (laboratory/studio-based fields)
- Band 3** – £18,560 (Bath School of Art, Film and Media, and Bath School of Design)
- PGCE** – £16,460

There are other Master's programmes that have fees outside of these bandings, it is advised that you check tuition fees on the course pages of the website.

SCHOLARSHIPS

BSU offers a wide range of scholarships and bursaries dedicated to International students to help support your studies. Talk to your Regional Representative to find out more, or visit www.bathspa.ac.uk/funding

ACCOMMODATION

There are lots of accommodation options in Bath so you can find somewhere that you feel at home and Bath is recognised as one of the safest student cities in the UK*. Our Student Accommodation Team can give you advice and support on how to find housing in Bath.



Explore
Click to find out more about our accommodation.

*Complete University Guide 2023

OUR WORLD

As a social enterprise, we take our responsibility for taking care of and protecting our spaces, as well as our people, very seriously. We make the world a better place, one student at a time, through our education, our research and our business practices.

We're a certified member of Social Enterprise UK (SEUK) - the leading global authority and largest network of social enterprises in the UK – and are proud to have been nominated as 'UK Social Enterprise of the Year' two years in a row, which recognises us as one of the country's most innovative and impactful businesses.

What is a social enterprise?

Social enterprises exist to make the world a better place by tackling social problems, providing training and work opportunities, and by putting people, communities and the environment at the heart of their work.

What does this mean for you?

This means you'll be learning in an organisation that is an active participant in the local community, that cares about social issues on and off-campus, and whose students and staff work to actively improve the lives and opportunities of those around them.

 **Explore**
Click to find out more about BSU as a Social Enterprise.



45%

reduction in energy intensity (2010-2020)

CUT

our scope1&2 carbon emissions in half since 2008, reducing this by a further 4% in 2023/24.

40%

reduction in water consumption (2017/18 to 2023/24)

75%

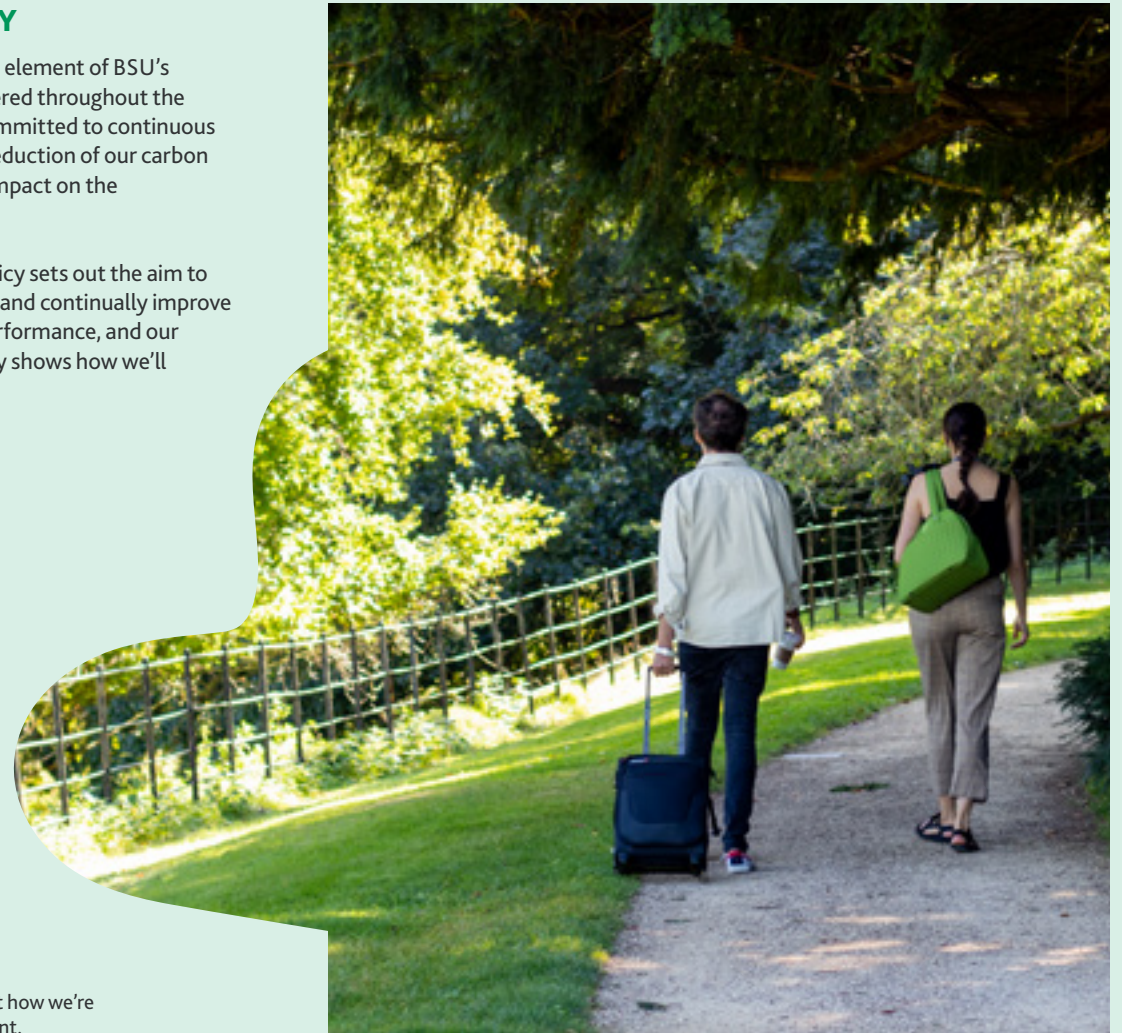
of all waste is recycled

SUSTAINABILITY

Sustainability is a core element of BSU's identity and is considered throughout the institution. We are committed to continuous improvement in the reduction of our carbon footprint, and wider impact on the environment.

Our Sustainability Policy sets out the aim to minimise our impacts and continually improve our environmental performance, and our Sustainability Strategy shows how we'll deliver this.

 **Explore**
Click to learn more about how we're caring for the environment.



GREEN MILESTONES

2016

All electricity switched to sustainable sources

2018

Published our Sustainability Strategy

2020

Published our Climate Pledge for staff and students

Awarded ISO50001

2021

Bronze Accreditation as a Hedgehog Friendly Campus

Re-certified ISO14001

2022

Silver Accreditation as a Hedgehog Friendly Campus

Certified Social Enterprise by Social Enterprise UK

Awarded Social Enterprise Gold Mark by Social Enterprise Mark

2023

Gold Accreditation as a Hedgehog Friendly Campus

Achieved 1st Class award in the People and Planet University League table

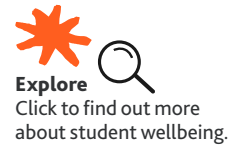
2024

£19 million has been invested into green products with Lloyd's banking

Teamed up with environmental behaviour change specialists, City to Sea, to reduce single use cups on campus with the Refill Return Scheme

Launched the Vape Recycling Scheme

STUDENT WELLBEING



Student Wellbeing Services are here for you. You can access professional advice and guidance to help you make the most of your time at university, including disability, general wellbeing, physical or mental health.



MENTAL HEALTH

Mental Health Advisors provide a range of interventions to enable the mental health of Bath Spa students. They can also speak to applicants, their families and supporters about preparing for university and arranging any referrals or support that may be helpful when transitioning to university life.

OUT OF HOURS

There are useful services and resources available to help you manage your wellbeing and mental health; including online, telephone and app-based services, available 24/7, all year round. You can also access the Sitting Room; a calm space on campus where you can go in the evenings and weekends to connect with others and access support and guidance.

GENERAL WELLBEING AND MONEY ADVICE

Student Wellbeing Services Advisors offer non-clinical advice and practical guidance, and can help you problem-solve and coordinate the right support for you. They also provide money advice, including ensuring you are able to access your full entitlement to student finance and other funding.

STUDENT WELLBEING NAVIGATORS

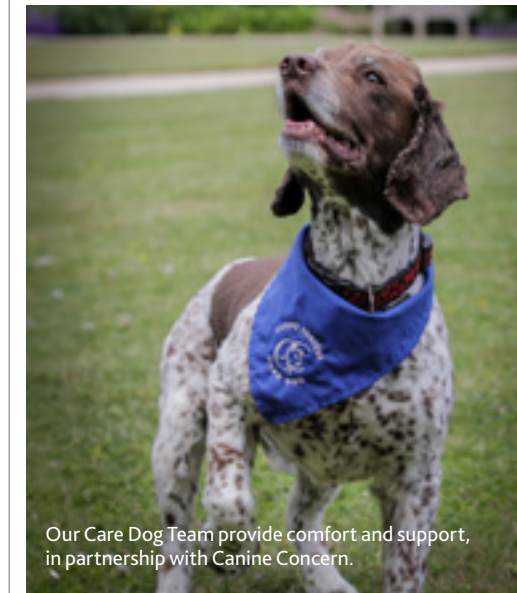
Student Wellbeing Navigators are trained students who deliver peer-led activities and initiatives, focused on promoting wellbeing and mental health. Working alongside our Wellbeing Facilitators, they are a familiar presence around campus in the evenings and on weekends and can signpost students to useful information and services. Our Student Wellbeing Navigators also offer 1:1 peer support as well as arranging events for students both on and off campus.

ACCESSIBILITY AND DISABILITY

All students should have an equal opportunity to experience university. We provide information, guidance, advice and practical support to students who identify as disabled and neurodiverse, including dyslexia, dyspraxia, autism spectrum, mental ill-health, medical conditions and sensory or mobility impairments.

MEDICAL SERVICE

As a student, you can register with the University Medical Service and access it all year round.



Our Care Dog Team provide comfort and support, in partnership with Canine Concern.

SUPPORT FOR TRANS AND NON-BINARY STUDENTS

Student Wellbeing Services provides a range of support for trans and non-binary students, or students who may be questioning their gender identity. We can help with practical aspects such as changing your name on University systems, raising awareness of your pronouns, enabling access to appropriate facilities and spaces, and supporting you through any treatments, as well as providing a safe space to explore any questions or concerns you may have. You can access a lead contact in Student Wellbeing Services to speak about any practical or therapeutic support you may find helpful.

CARE EXPERIENCED, FOYER LEAVERS, ESTRANGED STUDENTS OR YOUNG ADULT CARERS

If you identify with any of these groups, you can access a named advisor in Student Wellbeing Services who will be your point of contact throughout your time at university. They can speak with you about your eligibility for additional funding, accommodation and other useful support and services. Bath Spa University has taken the Stand Alone Pledge to demonstrate our commitment to helping students who no longer have contact with their family or guardian. Bath Spa University is also a signatory of the Care Leavers Covenant.

CHAPLAINCY

Here for everyone – to walk with you through opportunities and challenges and talk about questions of life and faith.

REPORT AND SUPPORT

Report and Support is an online reporting tool for students, staff and visitors to the University to report incidents relating to bullying, harassment, violence, assault, hate crime and sexual violence, harassment and misconduct. The University has specially trained staff to support you, including trained Sexual Violence Liaison Officers (SVLOs).



The Students' Union (SU) is here to represent and support all Bath Spa University students, including postgraduate students. All the services provided are available to you, and you might find some of their accommodation and careers support particularly useful.

Arran Feltham, Vice President Education






"At Bath Spa Students' Union, postgraduate students can access a variety of services, from academic support and student representation, to vibrant social events and societies. With a dedicated advice service and a welcoming community, we ensure every postgraduate enjoys a supportive and enriching university experience."

The SU is an independent charity which works closely with BSU to ensure students have the best experience while they study here. They are led by four elected Sabbatical officers, who represent the voices of all students at BSU, and are elected by the student body to work full time as representatives.

As a postgraduate student, you'll be represented by Course Representatives and Senior Academic Representatives. Their role is to collect feedback from their peers and communicate it to relevant academic and university staff members throughout the year. They also work to inform the Vice President Education and the Students' Union.


There are many ways for you to get involved with the SU at Bath Spa University. You can join any of the 70+ student-led clubs, societies and networks, including the Postgraduate Network. Make use of the SU's facilities, including the Bar & Kitchen, Gym and brand-new events and activities space.

Get involved in student campaigns on issues such as health and wellbeing, personal safety, and academic issues, and vote in elections. You could even become a Course Rep yourself and represent your cohort. The SU also run an independent Advice Centre, providing advice on academic, welfare, housing and sexual health matters, and signposting students to further support.

 @bathspaSU 
 bathspasu@bathspa.ac.uk

Use your time as a postgraduate to continue to develop your interests outside of your studies with clubs and societies, or try something completely different: there'll always be someone like-minded to meet!



 **Explore**
Click to find out more about our SU.



Until March 2025



OUR COURSES

43-44 **ART**

- 45-46 Fine Art
 - Fine Art (Ceramics)
 - Fine Art (Curatorial Practice)
 - Fine Art (Media)
 - Fine Art (Painting)
 - Fine Art (Photography)

47-48 **BUSINESS AND LAW**

- 49-50 Accounting and Finance
- 51-52 Arts Management
- 53-54 Business and Management
- 55-56 Cybersecurity and Emerging Technologies
- 57-58 Fashion Management
- 59-60 International and Commercial Law
- 61-62 Law and Business
- 63-64 Legal Foundations
- 65-66 Marketing and Brand Management
- 67-68 MBA
- 69-70 MBA Leadership

71-72 **DESIGN**

- 73-74 Cybersecurity
- 75-76 Design
 - Design (Graphics)
 - Design (Illustration)
 - Design (Textiles)
 - Design (Visual Communication)

77-78 **EDUCATION**

- 79-80 Counselling and Psychotherapy practice
- 81-82 Education (Early Childhood Studies)
- 83-84 Education (Leadership and Management)
- 85-86 Educational Leadership (Teach First)
- 87-88 Inclusive Education
- 89-90 Professional Practice
- 91-92 Professional Practice in Higher Education
- 93-94 Specific Learning Difficulties and Dyslexia
- 95-96 TESOL
- 97-98 Waldorf Education and Creative Pedagogies

99-100 **MUSIC AND PERFORMING ARTS**

- 101-102 Commercial Music
- 103-104 Dance
- 105-106 Performance (Acting)
- 107-108 Performance (Creative Producing)
- 109-110 Performance (Directing)
- 111-112 Performance (Music)
- 113-114 Sound (Composition and Sonic Art)
- 115-116 Sound (Design)
- 117-118 Sound (Production)

119-120 **TEACHER TRAINING**

- 121-122 PGCE Primary and Early Years
- 123-126 PGCE Secondary
 - Art and Design
 - Business Studies
 - Computing
 - Design and Technology
 - Drama
 - English
 - Geography
 - History
 - Mathematics
 - Modern Languages
 - Music
 - Physical Education
 - Religious Education
 - Science (Biology, Chemistry or Physics)

127-128 **WRITING, PUBLISHING AND HUMANITIES**

- 129-130 Children's Publishing
- 131-132 Creative Writing
- 133-134 Heritage Management
- 135-136 Nature and Travel Writing
- 137-138 Scriptwriting
- 139-140 Writing for Young People

ART

Our MA Fine Art pathways (Fine Art, Ceramics, Curatorial Practice, Media, Painting, Photography) give you a breadth of interdisciplinary skills and experience in professional workshops and studios to enable you to take your creative practice further.

→ Fine Art



Fine Art

Location

Locksbrook

Length

One year full-time

Awards

MA Fine Art

Entry month

September 2025 (All Pathways)



[View this course](#)

View course pathways

[MA Fine Art \(Ceramics\)](#)

[MA Fine Art \(Curatorial Practice\)](#)

[MA Fine Art \(Media\)](#)

[MA Fine Art \(Painting\)](#)

[MA Fine Art \(Photography\)](#)

Push boundaries and professionalise your skills as you embed theory, multi-disciplinary practices and collaboration in your own creative outputs.

What does it involve?

In our MA Fine Art programme, you'll learn to adopt an interdisciplinary and material-led approach, based on experimentation, risktaking and personal innovation. It will also encourage you to build collaborative relationships with other artists and develop transferable skills by working with students from across the university.

You'll identify your individual position and learn to promote and exhibit your work professionally. You'll take a holistic approach, embedding theory, research, and historical and contemporary practice into your work. You'll also engage with galleries, museums, curators, artists and businesses, ready for the next step in your professional or academic career.

Where will it take you?

After completing your Master's, you'll have broadened your knowledge and learnt how to professionalise your practice. Whether you continue your studies or begin to carve a career in the world of Fine Art, your redefined approach to production will help you to progress to the next level.

MA Fine Art pathways

Our five additional MA Fine Art pathways enable you to explore fine art specialisms in-depth, while making the most of the cross-disciplinary department around you with common core modules across Master's courses in the Schools of Art and Design.

MA Fine Art (Ceramics)

Pushing the boundaries of your thinking about the medium using an interchange of knowledge from across the University. With specialist facilities, knowledgeable technical demonstrators and a busy creative environment, explore the art of ceramics in greater depth.

MA Fine Art (Curatorial Practice)

The role of the curator is changing. Engage with theory and history and approach a wide range of curatorial strategies to develop your independent voice. Move beyond the traditional collection and exhibition-based curation to engage new audiences and present art in thrilling and unexpected ways.

MA Fine Art (Media)

Identify, explore and develop your individual position as an artist through a combination of practice, research and professional development. You'll have access to specialist resources and equipment for moving image and sound production, including binaural immersive sound equipment, specialist still and moving image cameras, 360 cameras and editing equipment.

MA Fine Art (Painting)

This studio-centred course offers you the opportunity to explore and develop your own painting practice. You'll combine practical and theoretical knowledge to evolve your work in new ways.

MA Fine Art (Photography)

Take risks and learn from accomplished photographers and artists in dedicated studios, workshops and purpose-built darkroom facilities. Explore new techniques, develop skills and identify your individual position, embedding theory and professionalism in your creative practice.



Fine Art



BUSINESS AND LAW

We develop tomorrow's business leaders and entrepreneurs through student centred teaching, research, and industry knowledge.

- Accounting and Finance
- Arts Management
- Business and Management
- Cybersecurity and Emerging Technologies
- Fashion Management
- International and Commercial Law
- Law and Business
- Legal Foundations
- Marketing and Brand Management
- MBA
- MBA Leadership

Accounting and Finance

Location

Newton Park

Length

One year full-time or two years part-time

Awards

MSc Accounting and Finance

Entry month

September 2025



[View this course](#)

Develop the advanced knowledge and practical skills needed to succeed in the accounting and finance sector

What does it involve?

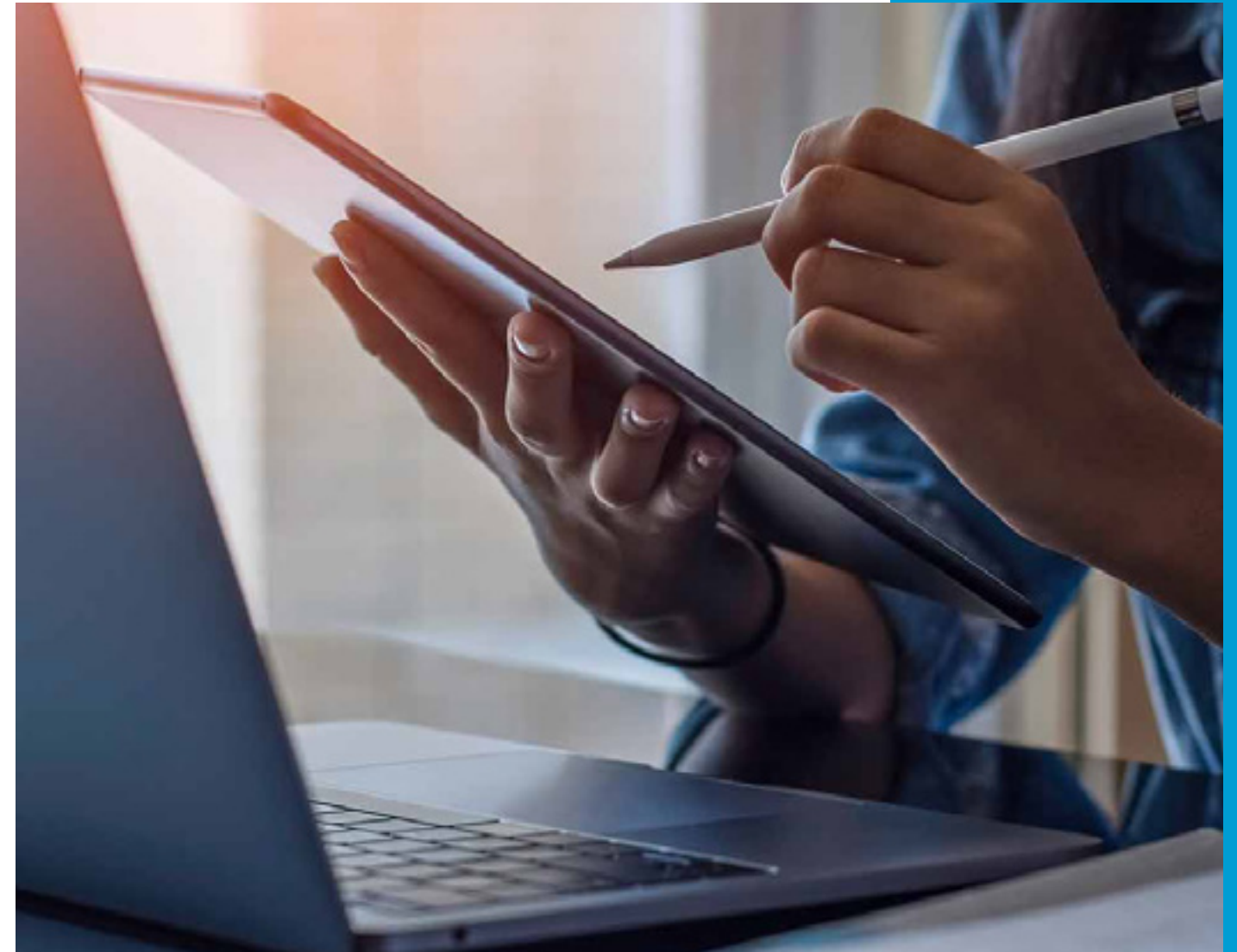
This course is designed to equip you with the practical knowledge and skills demanded of successful managers. You'll learn how to strategically direct an organisation, by analysing and interpreting financial information.

You'll stay updated on current issues, theories and insights in the world of accounting and finance. By studying complex, contemporary subjects to an advanced level, you'll develop a solid grasp of many aspects of accounting and finance including corporate finance, risk management, global financial markets and investment strategies among others.

Through case studies, simulations, and practical projects, you'll hone analytical and decision-making skills. This will equip you to tackle complex financial challenges and succeed in a variety of roles within the industry, boosting your employability.

Where will it take you?

You'll graduate with a respected Master's degree, from an excellent business school. Mapped to CIMA and ACCA accreditation, this finance and accounting programme will significantly enhance your employability, giving you a step up into accountancy professions.



Arts Management

Location

Newton Park

Length

One year full-time or two years part-time

Awards

MA Arts Management

Entry month

September 2025



[View this course](#)

Gain a deeper understanding of the creative economy, current policy and the evolving UK arts ecosystem, while embedding best practice in professional arts management.

What does it involve?

Building on your own experience, in this Arts Management Master's course you'll expand your arts knowledge, management skills, entrepreneurial thinking and creative leadership skills. The flexible course adapts to the ever-changing world of culture and the arts, you'll analyse current debates in the arts, and apply them to contemporary practice, structures, funding and participation. It will expand your theoretical understanding and professional knowledge of cultural management, through hands-on experience and workbased learning delivered in close collaboration with leading arts organisations.

Where will it take you?

Culture, the arts and the creative industries are estimated to be worth over £81 billion to the UK economy. Careers in arts management are varied and cover every cultural and artistic area: events and venue management, programming events and seasons, marketing and audience development, fundraising, community engagement and social inclusion, education and learning, managing artists and performers.

“I was able to balance the course well with working full-time, and the two even complemented each other. The subject content was really fascinating, particularly the chance to meet representatives from the arts sector.”

Charlotte Kippax,
MA Arts Management graduate



Business and Management

Location

Newton Park

Length

One year full-time or two years part-time

Awards

MA Business and Management

Entry month

February 2025
September 2025



View this course

Become a socially and ethically engaged, globally connected professional who is creative, enterprising, resilient and innovative.

What does it involve?

This Business and Management degree provides you with a broad introduction to the fundamental principles of business and management in a rapidly changing, increasingly globalised world. Supported by practice-based interdisciplinary teaching and research, you'll develop your business expertise alongside the practical and professional skills needed to effectively manage the challenging issues affecting organisations today. You'll engage with simulated scenarios that require you to operate as if in a real-world environment, across a curriculum enriched by our connections with local, regional, national and international organisations.

Where will it take you?

Our course prepares you for a wide range of occupations across all sectors. You'll have solid practical skills and techniques and be ready to apply them in a professional context. Bring your learning to life in marketing, enterprise, start-ups, accounting or international business.

Extend your studies with a placement

This extended version of our Master's in Business and Management with Integrated Placement offers you the chance to undertake an industry placement or work-based independent project to boost your networks and develop your career.



Cybersecurity and Emerging Technologies

Location

Newton Park

Length

One year full-time or two years part-time

Awards

LLM Cybersecurity and Emerging Technologies

Entry month

September 2025



[View this course](#)

Join the next generation of legal professionals who are leading the critical and fast-paced field of cybersecurity and emerging technologies.

What does it involve?

This specialised Master's degree will equip you with a profound understanding of the legal, regulatory and ethical frameworks governing cybersecurity and emerging technologies. You'll develop the skills and knowledge needed to shape policies, advise on legal and regulatory matters and contribute to the development of secure and ethical technological practices.

Learn to address complex legal challenges such as data breaches, cybercrimes, digital rights and the regulation of emerging technologies like AI, blockchain and the Internet of Things (IoT).

Where will it take you?

By the time you graduate, you'll be well-prepared to take on influential legal, regulatory and policy roles within technology and cybersecurity. Whether you aim to work in a top-tier law firm, a multinational corporation or a government agency, your expertise will be highly sought after.

Graduates often assume the following positions; Cybersecurity Legal Advisor, Technology Policy Analyst, Data Protection Officer, Compliance Specialist, Cybercrime Investigator, Legal Consultant for Emerging Technologies, Academic/Research Specialist.



Fashion Management

Location

Newton Park

Length

One year full-time or two years part-time

Awards

MA Fashion Management

Entry month

September 2025



[View this course](#)

Join an inspiring community of changemakers and become a leader in the business of sustainable fashion.

What does it involve?

Our fashion management Master's builds the leadership skills you need to identify and address the key fashion management issues of our time.

You'll develop your academic and research skills alongside a practical understanding of business, marketing, and communication – all from a sustainable perspective. You'll also have the opportunity to explore an area of the fashion industry that interests you and through which you could make real, sustainable change in fashion – whether through starting your own business, partnering with a fashion brand or not-for-profit, getting involved in politics, or conducting a piece of research overseas.

Along the way, you'll earn additional accreditation from the Digital Marketing Institute (DMI).

Where will it take you?

Graduates of this course will be well-suited to a wide range of careers in the business of fashion. They may become fashion entrepreneurs, policymakers in the industry, or work in NGOs (non-government organisations)



International and Commercial Law

Location

Newton Park

Length

One year full-time or two years part-time

Awards

LLM International and Commercial Law

Entry month

September 2025



[View this course](#)

Combine rigorous study with practical applications to gain the specialist skills and knowledge required to navigate the complexities of global commerce.

What does it involve?

Our LLM in International Commercial Law is more than just a degree; it's a gateway to a successful and impactful career in the global legal arena.

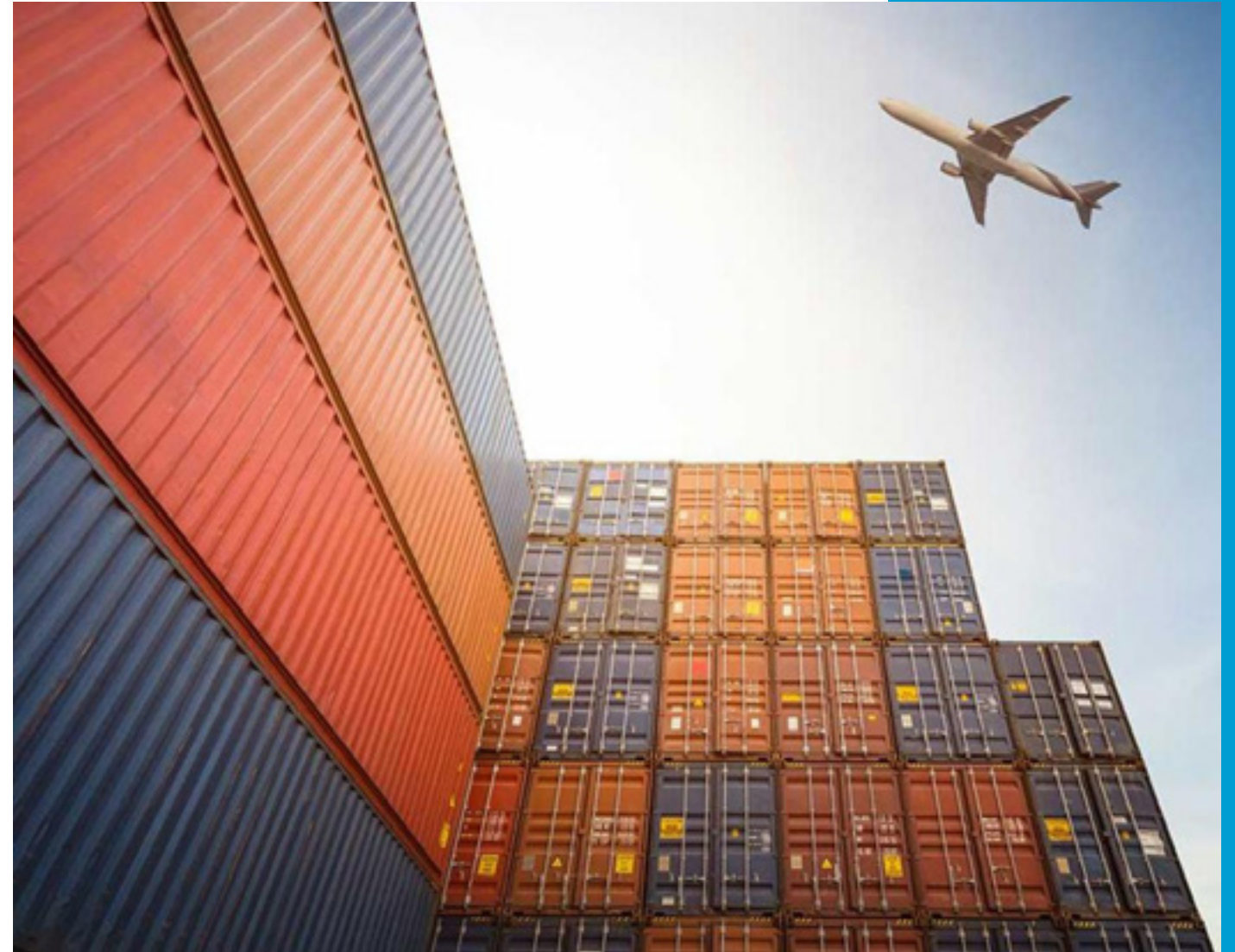
Throughout the course, you'll examine the legal frameworks and regulations that govern international trade and commerce and be introduced to key legal instruments such as the CISG and UNCITRAL.

Learn to initiate, lead and respond to change in various organisational contexts, while you develop professionalism, effective collaboration and precise communication skills.

Where will it take you?

You'll graduate with a deep understanding of the legal challenges faced by businesses operating across borders, and know how to position yourself as an expert who is capable of addressing them.

Graduates may enter the following fields; International Trade, Corporate Counsel, Arbitration Specialist, Intellectual Property, Compliance Officer, Legal Consultant, Policy Advisor, International Development Advisor.



Law and Business

Location

Newton Park

Length

One year full-time or two years part-time

Awards

LLM Law and Business

Entry month

September 2025



[View this course](#)

Develop your skills as a creative professional or entrepreneur with this career-enhancing qualification providing a contemporary, practical and innovative perspective of law and business-related subject matter.

What does it involve?

Enhance your academic and organisational skills whilst developing practical subject-specific skills and knowledge across the disciplines of law, business and management. There's a natural focus on business organisations and legal transactions to help develop your professionalism, effective collaboration, and precise communication. Alongside this, the course seeks to prepare you to initiate, lead and respond to change in various organisational contexts.

You'll also have the opportunity to work with external partners to support clients with legal problems, or to undertake a supervised research project on a legal area of your choice.

Where will it take you?

You'll develop a good range of transferable and subject-specific skills, enhancing your employability for a wide variety of law, business and management-related roles. The flexible range of module options enables you to tailor your study to support your specific career aspirations.



Legal Foundations

Location

Newton Park

Length

One year full-time or two years part-time

Awards

LLM Legal Foundations

Entry month

September 2025



[View this course](#)

Progress towards your legal qualification in England and Wales and position yourself to become a lawyer of the future.

What does it involve?

This Legal Foundations Degree covers the seven foundations of legal knowledge and offers preparatory learning for elements of the Solicitors Qualifying Examination (SQE). You'll enhance your academic and organisational skills, whilst developing your legal skills and knowledge.

You'll have the opportunity to work with external partners to support clients with a range of legal problems in our Legal Clinic, or to undertake a supervised research project on a legal area of your choice.

Where will it take you?

As an authorised SQE training provider, we've designed this course to support you to make progress towards legal qualification in England and Wales. You'll also enhance your future employability in law-related fields if you decide to follow other law-related career paths.



Marketing and Brand Management

Location

Newton Park

Length

One year full-time or two years part-time

Awards

MA Marketing and Brand Management

Entry month

September 2025



[View this course](#)

Learn to manage complexity, diversity and change as you develop your talent and potential as a creative, innovative and enterprising leader.

What does it involve?

Our Marketing and Brand Management Master's gives you the skills and practical experience that organisations need in an ever-changing business environment. It provides opportunities to develop your professional networks, and enables you to experience the aspects of marketing and brand management most relevant to your chosen career path.

During the course, you'll combine bespoke marketing and brand management modules with a choice of more general business and management modules. You'll also get the chance to produce a substantial sector facing body of work in marketing and brand management.

Where will it take you?

This course will enable you to develop the skills businesses are looking for today and allow you to practice in work-based scenarios. Careers in marketing and branding cover all sectors, so there is a real opportunity to follow your own passions with a solid grounding in professional practice.



MBA

Location

Bath Spa University London

Length

One year full-time or two years part-time (for Home students only)

Awards

MBA

Entry month

February 2025
September 2025



View this course

Gain expertise in both the theoretical and practical aspects of business and management with our MBA, taught in London.

What does it involve?

Designed to provide the latest in professional career development, this MBA is for people with existing professional experience who now want to forge ahead in their careers.

We'll support your professional development as a manager through the academic study of business, class discussion and networking, and work-based learning.

By collaborating with course peers, you'll discuss and reflect on your previous experiences and have opportunities to put newly acquired knowledge into practice to address real-life work scenarios.

You'll find yourself blending theory and practice in authentic assessments and building skills that organisations need in an ever-changing business environment.

Where will it take you?

Your MBA will see you master skills that are transferable across a wide variety of industries from management and consultancy to Non-Profit Organisations and Government.

The embedded real-world content and context-based assessment on this course ensures that you leave with relevant experience, executive level skills, and a developing professional network.



MBA

Leadership

Location

Newton Park

Length

One year full-time or two years part-time

Awards

MBA Leadership

Entry month

February 2025
October 2025



[View this course](#)

Learn to manage complexity, diversity and change as you develop your talent and potential as a creative, innovative and enterprising leader.

What does it involve?

This MBA Leadership course is designed to further develop your understanding of theoretical and practical knowledge and expertise in business, management and leadership. You'll gain an international perspective on business, management and leadership and deepen your understanding of the impact of globalisation on business, societies and the environment. We'll support your professional development with peer discussion and networking, evaluation, work-based learning and reflective practice. You'll be challenged to develop leadership and management expertise that is relevant to your chosen career path, as well as lifelong learning skills.

Where will it take you?

An enthusiasm for business and your learning as part of personal professional development will take you down many career paths. The embedded real-world content and context-based assessment on this course ensures that you leave with relevant experience, executive level skills, and a developing professional network.



After you graduate, and provided that you pass every module, you'll gain a Level 7 Strategic Diploma in Management and Leadership Practice from the Chartered Management Institute (CMI) in addition to your MBA qualification.



DESIGN

Design the future – from cyber defence systems to interactive experiences, illustration and graphics. By working across the department, you'll learn to collaborate and create together, as well as refine your own work.

- Cybersecurity
- Design



Cybersecurity

Location

Newton Park

Length

One year full-time or two years part-time

Awards

MSc Cybersecurity

Entry month

February 2025
September 2025



[View this course](#)

Understand the scope of the cybersecurity threat landscape, explore the strategies that enable businesses to operate securely and learn how to employ these in a professional context.

What does it involve?

This Cybersecurity Master's has been designed in collaboration with some of the UK's cyber business leaders. You'll gain the insight and toolkit needed to make effective operation decisions that protect organisations at risk of cyber attack. You'll begin by building knowledge of the fundamentals of cybersecurity before examining existing and emerging defence and offense strategies. Equipped with a good understanding of vulnerabilities and attack vectors, you'll then explore how to build an active cyber defence armoury.

You'll also gain the conceptual context needed to engage in the practical realities of cybersecurity management.

Where will it take you?

For graduates of Computing disciplines, MSc Cybersecurity supports entry into a range of IT roles where cybersecurity is an integral component but not necessarily an entire responsibility. You'll be able to demonstrate your value to a range of companies quickly, and later build on the management skills gained during your study to compete for more senior positions.



Design

Location

Locksbrook

Length

One year full-time

Awards

MA Design

Entry month

September 2025



View this course

View Pathways:

MA Design (Graphics)

MA Design (Illustration)

MA Design (Textiles)

MA Design (Visual Communication)

Develop genuine skill and reach your creative potential as you finesse your design practice in a collaborative environment.

What does it involve?

Our practical MA Design encourages interplay of work and ideas between disciplines and is grounded in professional development and research. Collaborative work alongside students of curation, graphic design, photography, illustration and other Design and Fine Art specialisms will help you build a strong professional and critical context for your practice.

You'll develop your own projects while undertaking practice-led research, theory and professional practice modules with specialist tutors and technicians guiding your progress, and supporting you to create your own approach. You'll use subject-specific studios and workshops and have access to specialist software and computers as well as an excellent art and design library.

Where will it take you?

By the end of the course, your abilities will be clearly evident in your portfolio, and you'll be ready to move into industry or to continue to further study. Your body of work will allow you to progress into a design career, encompassing skills such as book design, digital design, branding and typography. From art directing to set design, multimedia art to illustration, the career possibilities are varied.

MA Design pathways

Our four specialist pathways enable you to explore design in depth, while making the most of the cross-disciplinary department around you with common core modules across Master's courses in the Schools of Art and Design.

MA Design (Graphics)

Our collaborative approach to Master's courses means that you can develop your graphics skills in a variety of contexts. Studying alongside designers with different specialisms will allow you to become a more rounded designer, and prepare you for a wide range of careers in graphic design.

MA Design (Illustration)

Develop your drawing and illustration practice through creating professional-level projects. You will learn from accomplished illustrators and design professionals who provide excellent academic and technical support. You will benefit from dedicated studio spaces and excellent workshop and print facilities.

MA Design (Textiles)

Specialist tutors and technicians will guide your progress, supporting you to create your own approach and make your design outcomes more successful. You'll have the opportunity to develop a personal route of study and explore and research textiles through print, embroidery, knit, mixed-media or surface embellishment for interiors, fashion or as applied arts.

MA Design (Visual Communication)

By integrating your methods with those in related fields across the School of Design in this MA course, you'll become a more effective specialist photographer, graphic designer or illustrator. At a time when boundaries between these disciplines are changing – and in some cases dissolving – this is particularly important.



EDUCATION

Focus on an aspect of pedagogy that interests you, and explore it in depth with education specialists. We offer a range of courses to cover all aspects of teaching in the modern world.

- Counselling and Psychotherapy practice
- Education (Early Childhood Studies)
- Education (Leadership and Management)
- Educational Leadership (Teach First)
- Inclusive Education
- Professional Practice
- Professional Practice in Higher Education
- Specific Learning Difficulties and Dyslexia
- TESOL (Teaching English to Speakers of Other Languages)
- Waldorf Education and Creative Pedagogies

Counselling and Psychotherapy

Location

Distance Learning

Length

One year full-time or two years part-time

Awards

MA Counselling and Psychotherapy

Entry month

September 2025



[View this course](#)

Gain a Master's in Counselling and Psychotherapy practice to complement your professional counselling and/or psychotherapy training.

What does it involve?

This Master's in Counselling and Psychotherapy Practice is suitable for counsellors and psychotherapists who have completed a recognised counselling or psychotherapy training qualification, and who are working or who have worked professionally as a counsellor or psychotherapist.

The aims of the programme are to recognise and enhance understanding of good professional practice and deepen theoretical knowledge, to engage in evidence-based practice and research, and to enhance skills of reflection and reflexivity and develop self-awareness to support continued professional development.

Where will it take you?

The programme will give practising counsellors and psychotherapists an academic, university-based higher degree qualification to complement their professional qualification.

“The MA in Counselling and Psychotherapy offers wonderful support, from the course lead to the administrative staff and the library resources. The flexibility of the course and being able to choose my own topic within counselling and psychotherapy was a significant advantage over other courses. Once I had an opportunity to speak to the course leader I was convinced it was the right course for me.”

Ruth, MA Counselling and Psychotherapy



Education (Early Childhood Studies)

Location

Newton Park

Length

One year full-time or two years part-time

Awards

MA Education (Early Childhood Studies)

Entry month

September 2025



[View this course](#)

Study early childhood education issues in depth, covering policy, practice and theory, in our Master's in Education specialising in early childhood studies.

What does it involve?

You'll have opportunities to evaluate and critically analyse issues and challenges whilst focusing on political, ethical, cultural and social issues both in early childhood and in education in general. The course draws on theoretical insights into the study of early childhood which challenge and inspire. Children's right to play and to learn through play are important features throughout the course.

You'll explore perspectives of outdoor pedagogy and the importance of research in early childhood education. You'll consider ethical ways to engage with children, their families and communities in areas such as education for sustainability and children's engagement with nature.

Where will it take you?

Governments worldwide are now making early childhood education a priority and increasing their investment in provision for young children. You'll acquire specialist expertise in an area of education that is rapidly expanding and opening up new career opportunities.



Education (Early Childhood Studies)

Education (Leadership and Management)

Location

Newton Park

Length

One year full-time or two years part-time

Awards

MA Education (Leadership and Management)

Entry month

September 2025



[View this course](#)

A Master's designed for those who aspire to become, or are currently working as, leaders in an educational organisation.

What does it involve?

On this course you'll explore the opportunities and challenges that educational leaders face as they are given greater autonomy to have a positive impact on pupils and learners. We'll help you develop and improve your expertise as an educational leader through practice-based inquiry, in which you'll relate theory and research to your own working environment. You'll gain a critical understanding of the practices that characterise effective leadership, and learn how to bring about change and improvement.

Where will it take you?

You'll graduate with practical and theoretical knowledge, well-placed to apply for middle, senior or leadership roles in schools or other educational institutions. The grounding in academic work provides a foundation for further research at PhD level which can lead to employment in higher education.

“I wanted to broaden my understanding of educational leadership with a particular focus on the wider educational landscape in England. Bath Spa has helped me to understand Master's-level work at the same time as enabling and supporting me to pursue my own academic direction and approach to research and study.”

Jon Barr,
MA Education (Leadership and Management)



Educational Leadership (Teach First)

Location

Newton Park

Length

One year part-time

Awards

MA Educational Leadership (Teach First)

Entry month

September 2025



[View this course](#)

Develop your expertise as an educational leader with our Teach First leadership development Master's programme.

What does it involve?

This MA in Educational Leadership asks you to question, research, analyse and evaluate the challenges facing education and educational leadership in the 21st century, whether locally or globally. Drawing on internationally based research and informed by the values and mission of Teach First, this course is designed to develop and improve your expertise as an educational leader. You'll take a critical and cultural approach to leadership as a socially constructed and ethical practice. You'll also relate theory and research to your own working environment.

Where will it take you?

This is a 60-credit dissertation module, which builds on your existing PGCE / PGDE, to top-up your learning to a full Master's degree.

This qualification formally recognises your advanced skills in both teaching and leadership and will enable you to further your career in the classroom, or pursue leadership opportunities across all sectors of the economy.



Inclusive Education

Location

Newton Park

Length

One year full-time or two years part-time

Awards

MA Inclusive Education

Entry month

September 2025



[View this course](#)

Develop expertise in inclusive education at a time of significant educational reform.

What does it involve?

This course focuses on the issues that concern the inclusion of learners. These include the philosophical, ethical and legal aspects that can impact the provision of education in different settings. Through a combination of taught academic sessions and self-directed study, you'll gain in-depth knowledge of this field, and how it influences the way students (children, young people and adults) experience education in various national and international contexts.

The concept of inclusion is challenging and wide-ranging, and you'll be given the opportunity to engage critically with the policy and practice of inclusive education, as well as opportunities to develop your knowledge in specialist areas.

Where will it take you?

This Master's is designed for those who are working in education as teachers or programme leaders, as well as those who wish to learn more about this field. The course is also ideal for SENCos who have completed the National Award for SENCo and wish to continue their studies, as well as those who have completed the PGCErt SpLD/Dyslexia and have APS/ATS and wish to get their AMBDA or complete a full Master's.



Professional Practice

Location

Newton Park

Length

One year full-time or up to three years part-time

Awards

MA Professional Practice

Entry month

September 2025



[View this course](#)

A flexible Professional Practice MA suitable for applicants at various stages of their career seeking to develop their own practice.

What does it involve?

This flexible course allows you to tailor your study to suit your interests and working circumstances. You'll deepen your understanding and knowledge in areas of practice you're already familiar with, and develop new areas of practice if required. You'll engage with and learn about research methods, and complete an extended research project.

Our aim is to enable you to recognise and defend good professional practice, and to become competent in analysing, evaluating and restructuring your practice in changing circumstances, through engagement with evidence-based practice.

Where will it take you?

Having gained a broader and deeper view of education, you may wish to continue developing your current career or use your new skills and knowledge to pursue other options, such as education management or training. You'll also be well-placed to take your studies to PhD level.



Professional Practice

Professional Practice in Higher Education

Location

Newton Park

Length

Three to five years part-time

Awards

MA Professional Practice in Higher Education

Entry month

September 2025



View this course

A programme to help staff and research students address the key challenges of working in higher education.

What does it involve?

This flexible Master's course is designed to support your continued professional development through a range of module options, and offers both intermediate qualifications and external (HEA) accredited status (for those with suitable teaching practice in HE only). You'll choose modules based on your role and interests and study over a two to five year period.

The course is suitable for academics, professional services staff and research students, and can build on previous relevant PGCErTs (in HE practice) or HEA Fellowships via accreditation of prior learning. As a staff member or research student, the PPHE programme will help you meet the key challenges of working in the rapidly changing world of higher education while gaining credit and postgraduate qualifications for your professional development.

Where will it take you?

This Master's will help you evidence your commitment to professional development, and enhance the quality of your work, as well as the development of Higher Education in your workplace.



Professional Practice in Higher Education

Specific Learning Difficulties and Dyslexia

Location

Newton Park

Length

Three years part-time

Awards

MA Specific Learning Difficulties and Dyslexia

Entry month

September 2025



[View this course](#)

A British Dyslexia Association (BDA) accredited Certificate in Dyslexia and Specific Learning Difficulties (SpLD).

What does it involve?

If you're a teacher, or you already work in education (with school-aged learners), this course has been designed with you in mind. Through a mixture of theory and practice, you'll focus on how to identify and assess needs and teach learners who may be dyslexic. You'll study through workshops, case studies and assignments, justifying your professional practice through research.

This course is approved by the British Dyslexia Association (BDA), and can enable you to apply for:

- Approved Teacher Status (ATS)
- Approved Practitioner Status (APS)
- Associate Member of the British Dyslexia Association (AMBDA)
- Assessment Practising Certificate (APC)

With one or more of these qualifications, you become an approved teacher and/or assessor.

Where will it take you?

This qualification will broaden your individual career opportunities within and beyond the school context. Schools recognise that they need to understand, identify and support children with dyslexia. By acquiring specialist teaching and assessment skills around dyslexia, you'll be a valuable addition to the school team.



TESOL (Teaching English to Speakers of Other Languages)

Location

Newton Park

Length

One year full-time

Awards

MA TESOL (Teaching English to Speakers of Other Languages)

Entry month

September 2025



[View this course](#)

Develop your teaching practice with our MA TESOL course, based on our stunning campus in the heritage city of Bath.

What does it involve?

This course is for those who wish to teach English as a second or foreign language. You'll be taught through lectures, seminars, workshops, directed classroom-based activities and discussion. Peer-teaching opportunities, presentations and student-led workshops are also employed throughout the course, and you'll extend your knowledge base by engaging in independent research into your own practice. You'll also have the opportunity to complete teaching placements as part of your study.

We'll aid your understanding of the key theories and principles in TESOL, providing a balance of academic and professional content and experience. You'll develop your ability in language analysis and understanding, as well as furthering your knowledge on how to incorporate this appropriately in class materials.

Where will it take you?

Context-specific professional development is an important element in this Master's. We'll prepare you to return to your previous work context, or even move to a new one, with an adaptable knowledge base for that particular setting. Potential career paths include English teacher, language teacher trainer and curriculum developer, or you may choose to go on to PhD study.



“Since completing the course... I have taught EFL with young learners and adults on short courses in the UK, Austria, Italy, Poland, Switzerland as well as a year abroad in China.”

Rachel,
MA TESOL graduate

Waldorf Education and Creative Pedagogies

Location

Newton Park

Length

12 to 16 months

Awards

PGDip Waldorf Education and Creative Pedagogies

Entry month

September 2025



View this course

Broaden your career opportunities with this Postgraduate DiploMA jointly delivered by Bath Spa University and the Waldorf Learning Foundation.

What does it involve?

On this part-time course you'll critically evaluate and synthesise your understanding of a range of theoretical and philosophical perspectives related to creative environments and pedagogies, and policy and practice, including Waldorf Education.

You'll also consider local, national and international perspectives and critically analyse concepts such as equity and social justice, wellbeing and sustainability.

The programme upholds the professional and progressive standards of Waldorf Education as well as actively referencing a diversity of research and practice in creative pedagogies worldwide.

For each module, a two-day experiential Landcraft Retreat will offer immersion into craft and community.

Where will it take you?

When you graduate, you'll be a fully qualified Waldorf Education professional with a unique set of skills for facilitating creativity in education. You'll have completed a Professional Practice Portfolio, which demonstrates expertise in the Waldorf Teaching Standards, further enhancing your employability.



Click to play our course video



MUSIC AND PERFORMING ARTS

Take your performance to the next level, share ideas and dig into your specialism. Learn new skills and consolidate your knowledge in our practice-based courses for performers, musicians, actors, writers and production artists.

- Commercial Music
- Dance
- Performance (Acting)
- Performance (Creative Producing)
- Performance (Directing)
- Performance (Music)
- Sound (Composition and Sonic Art)
- Sound (Design)
- Sound (Production)

Commercial Music

Location

Newton Park

Length

One year full-time or two years part-time

Entry month

September 2025



View this course

Whether you're a recent graduate or an industry professional, develop your skills on our Commercial Music Master's.

What does it involve?

On this course you'll build on your current skills and experience whilst focusing on a particular area of the music industry – songwriting, music production or the music business. Your study will be tailored around your individual aspirations, and you'll work towards a major project based on your specialism. As a **songwriter**, you could create your own album, or write for others, and develop a showcase of material to pitch to publishers. As a **producer**, you could apply your skills to your own music or focus on producing for other artists. Your focus on the **music business** could encompass anything from artist management to setting up your own promotions company or starting a record label. Whichever specialism you choose, you'll be working with tutors who have worked in the music industry at the highest level.

Where will it take you?

Recent graduates have gone on to roles such as professional signed artist, published songwriter, working in a record company, music publisher, music agent, music promoter, studio producer/engineer and music manager.

“My MA helped me to get into the music business through all of the tools, and the support from staff, and being able to collaborate with other people on my course.”

James Paterson,
MA Commercial Music graduate

“Doing the MA, and doing the production route, gave me that extra bit of time to work out what I wanted to be doing and build up my portfolio before graduating.”

Amy Sargent,
MA Commercial Music graduate



Dance

Location

Newton Park

Length

One year full-time or two years part-time

Entry month

September 2025



[View this course](#)

Immerse yourself in an exciting and challenging artistic environment where you can develop your practice within an international community of dance artists.

What does it involve?

This programme is designed to build your knowledge and skills of creative dance forms, and will appeal to entrepreneurial dance artists who are keen to develop their own practice. As part of the School of Music and Performing Arts the course sits within a dynamic, artistic community of learners, and at the programme's heart is the creation and exploration of new work and creative ideas. There's an emphasis on supporting you to work with artists both within and beyond the discipline, as well as working with different live and digital 'sites' as potential performance arenas.

Alongside your practical investigations you'll also be given the opportunity to build your understanding of dance as a cultural, social and artistic phenomenon. The interplay between these conceptual ideas and your own creative outputs will be actively encouraged. You'll develop skills in how to apply research and critical perspectives to your own practice and different professional situations.

Where will it take you?

The course helps prepare you for a range of career opportunities in the arts including, but not limited to, choreography, interdisciplinary performance practices, teaching and doctoral study. Alongside guidance from your tutors, our Master's degree is supported by a number of high-profile associations with artists and dance- industry specialists. We'll support you to develop versatility and understanding of how to market and present your work in a professional manner. As a graduate of the programme you will be versatile and confident in managing a range of complex and dynamic scenarios, and have the entrepreneurial skills to succeed in a challenging but inspiring working environment.

“The course educates and exposes you to the industry, helping you to situate your own work within a wider professional context. The lecturers and tutors are inspiring and supportive. It is such a nurturing and stimulating place to study”

Alice Barton,
MA Dance graduate



Performance (Acting)

Location

Newton Park

Length

One year full-time or two years part-time

Entry month

September 2025



[View this course](#)

Take your performance skills to the next level with our highly practical acting course.

What does it involve?

You'll study through a variety of workshops, masterclasses, off-site visits and productions, honing your skills in voice, text, movement and acting, as well as exploring areas such as producing and directing. You'll work alongside professional actors and directors in our state-of-the-art specialist facilities, so you'll be working to professional standards by the time you graduate.

Throughout the course you'll have opportunities to build a theatre company and create public performances, including working on SparkFest, Bath Spa's festival of theatre, music and dance which we run in collaboration with Bath Festivals.

Our degree has been designed to provide you with all the tools you need to thrive in the modern acting environment, responding to current industry trends while examining theory, history and cultural contexts to inform your performance practice. You'll also be provided with media training to ensure you become skilled in communicating with interviewers and audiences, and you'll learn industry best practices that are inclusive and empower the actor.

Where will it take you?

When you graduate from this course, you'll be equipped to take on the challenges faced by the contemporary actor and thrive. Our graduates have become actors, producers, teachers and PhD students. You'll have the contacts and industry experience to take your career forward.



Performance (Creative Producing)

Location

Newton Park

Length

One year full-time or two years part-time

Entry month

September 2025



[View this course](#)

Work on real-time projects with our in-house production company, extend your artistic community through the university's industry partners and enhance your professional skills via productions.

What does it involve?

Designed to teach you the core skills you need to get your work to market, and help you develop industry contacts. The course is suitable for producers at all stages of their career, you'll learn and develop skills to enhance your creative vision, artistic judgement, business skills and acumen. If you're an established producer, you'll be able to develop, evaluate and reflect on your own practice. You'll also expand your artistic and market awareness by gaining insights into innovative artistic practices.

Our students work on real-time projects with our in-house production company, led by the University's Creative Producer, and gain the practical know-how to get their artistic ideas to audiences and sustain their practice.

Where will it take you?

After completing this course, you'll be able to develop your career with a strong sense of your own professional identity, more confidence in leading ambitious projects, and a clear sense of where your skills can take you. Perhaps as a freelance producer, or as part of a larger organisation. You'll also have developed your own network in the industry, and be abreast of current debates and themes, which will enable you to produce work that is pertinent and effective.



Performance (Directing)

Location

Newton Park

Length

One year full-time or two years part-time

Entry month

September 2025



[View this course](#)

A postgraduate directing course for directors of theatre and live performance at all stages of their career.

What does it involve?

Build a portfolio of performance experiences as part of Bath Spa University's diverse theatre productions. From developing small companies to managing large-scale productions, and from classical to contemporary theatre, you'll get a broad and advanced understanding of working in theatre today.

Our practical classes and seminars with industry professionals will give you the skills and knowledge to facilitate safe, creative spaces. And you'll explore approaches to directing through seminars and practical work while developing an advanced understanding of actor training. We'll be dedicated to your individual development; you'll receive support through tutorials and will embark on your own production work.

The course will allow you the opportunity to direct your own productions and collaborate with professionals, especially at our student-led festival, SparkFest, which we run in partnership with Bath Festivals, and as part of our in-house company, Bath Spa Productions.

Where will it take you?

Graduating from our postgraduate course will mean you have developed the skills to create innovative and current work. You'll have built a strong portfolio of work, and a network of contacts to enable you to take your career to the next level.



Performance (Music)

Location

Newton Park

Length

One year full-time or two years part-time

Entry month

September 2025



[View this course](#)

Develop your individual and ensemble skills and enhance your understanding of the performance industry while working with directors, conductors, instrumentalists and creative producers.

What does it involve?

The course will help you to understand the wider world of the performance industry, gaining key skills and knowledge for your specific discipline. You'll receive one-on-one vocal or instrumental tuition from our experienced tutors and collaborate with other Performance students on real-time creative projects, as part of our in-house production company, Bath Spa Productions.

Throughout the course you'll perform for wide audiences, develop long term strategies for research and performance skills and prepare for your final project, normally a high-profile public recital.

Where will it take you?

Graduates from this course work in a wide range of performance-related areas such as orchestral performance, opera, conducting, choral direction, chamber musician, accompaniment, session work, music promotion, the record industry, broadcast media, teaching and community music projects.



Sound (Composition and Sonic Art)

Location

Newton Park

Length

One year full-time or two years part-time

Entry month

September 2025



[View this course](#)

Cover the spectrum of music, sound and technology appropriate to a wide range of work in existing and emerging sectors.

What does it involve?

This course allows you to work in any music genre, and cover areas such as soundscape recording, sound design, interactive audio (for applications such as live performance, gaming, VR, immersive environments and installations), spatial audio, hardware/software (instrument) design, and interdisciplinary practice incorporating other media.

We'll help you develop the technical skills you need, but the course is about sound more than technology, and values lo-tech and no-tech as much as the latest technological developments.

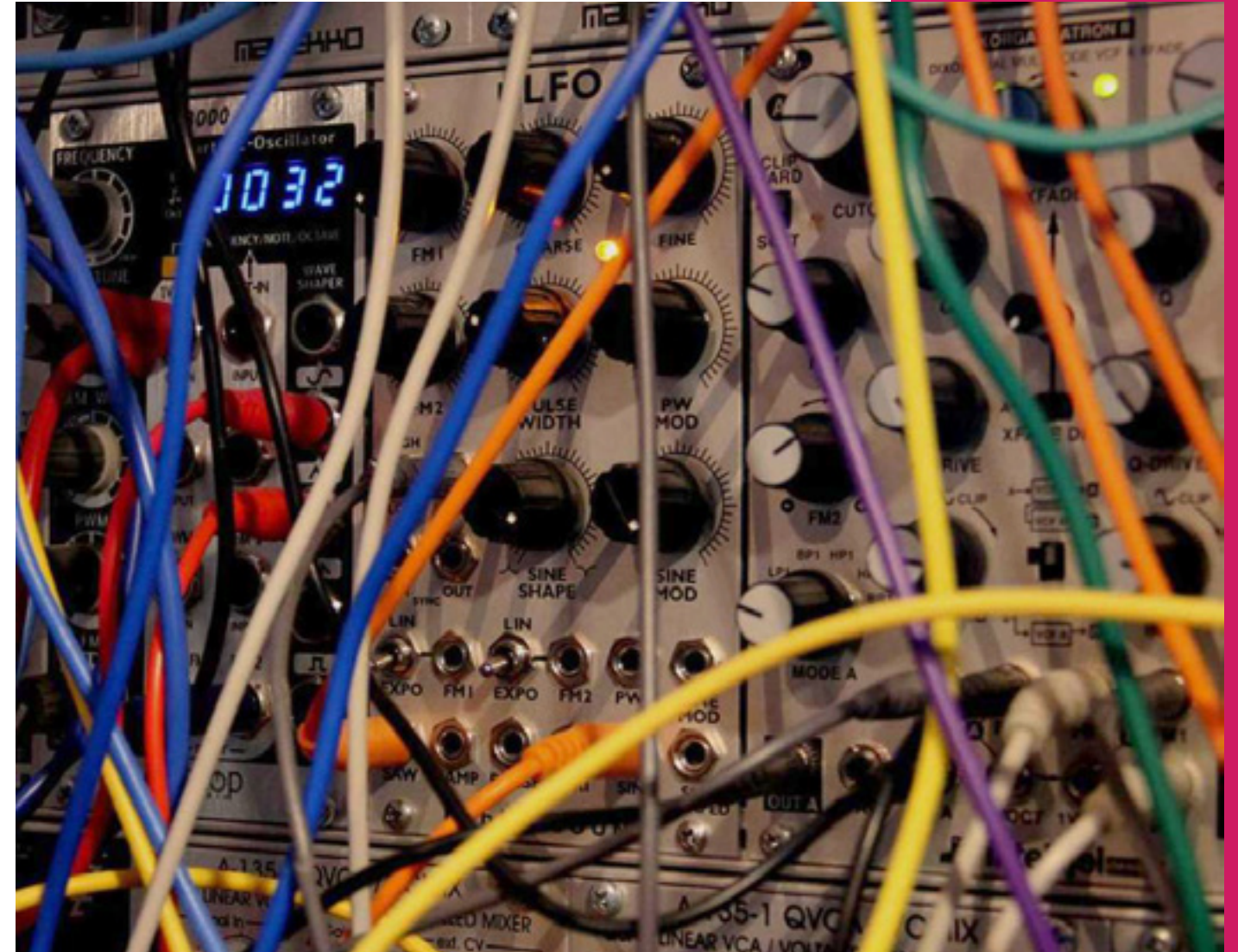
We cater for those working in a wide variety of styles and approaches and enable you to develop an individually-tailored portfolio of skills, experience, and artistic practice.

Where will it take you?

Our aim is that when you graduate, you'll have developed core problem-solving, analytical, and critical skills to support you in the ever-evolving music and sound landscape.

Our students have gone on to a range of successful careers in production, composition, music for film and TV, sound design for moving image and games, sound art, software development and engineering.

The course also provides the breadth necessary for further education and higher education teaching, and provides a basis for PhD research and beyond.



Sound (Design)

Location

Newton Park

Length

One year full-time or two years part-time

Entry month

September 2025



[View this course](#)

Explore a wide range of sound design techniques while building a unique portfolio of work to take into the next phase of your career.

What does it involve?

During the course, you'll focus on the more creative aspects of sound design and advanced audio workflows which will provide you with the technical skills to create work that you're passionate about.

You'll explore the creative use of sound within film, TV, animation, gaming, theatre and other audiovisual media, and we'll support your continued professional development by working with you to improve both your practical and your academic skills.

Our aim is for you to build an extensive portfolio of sound design and audio workflows. You can choose from a wide range of audio skills (e.g. dialogue editing, foley and field recording and surround sound and spatial audio) to practice and develop your individually-tailored portfolio of skills, experience and high quality work across them.

The end of your Master's culminates with a large-scale practical project and reflective journal.

Where will it take you?

Our graduates have had a range of successful careers in music for film and TV, animation and games as well as sound art and installations and software development. The course also provides the breadth necessary for teaching, and provides the basis required for PhD research and beyond.



Sound (Production)

Location

Newton Park

Length

One year full-time or two years part-time

Entry month

September 2025



[View this course](#)

Refine your craft, build a professional portfolio, and learn the skills you need to thrive in the sound and music industry, on this forward-thinking course.

What does it involve?

You'll be supported to pursue and develop your individual interests and aspirations within our vibrant MA Sound community. The course will give you an interdisciplinary approach to sound production, encompassing contemporary electronic, experimental, and urban music, and there will be opportunities to collaborate with related fields of practice.

Regular guest speakers, such as composers, sound artists and industry professionals, will deepen your knowledge and understanding of current contexts.

Our aim is for you to build an extensive portfolio of composition and production for the next stage in your career.

Where will it take you?

Completion of the course will equip you for the current employment landscape, where a combination of traditional sound production roles are required alongside broader practice in sound, music and other media. The course also provides the breadth necessary for teaching, and provides the basis required for PhD research and beyond.



TEACHER TRAINING

We have a strong reputation for training teachers. Through our innovative and supportive environment, we'll make sure you're ready for the classroom, and that children in your care achieve the best outcomes in their learning.

- PGCE Primary and Early Years
- PGCE Secondary

Primary and Early Years

Location

Sion Hill

Length

One year full-time

Awards

PGCE Primary and Early Years

(3-7 age phase)

PGCE Primary and Early Years

(5-11 age phase)

PGCE Primary and Early Years

(7-11 age phase)

Entry month

September 2025



[View this course](#)

Developed in partnership with schools and early years settings, our training programme will support you to become an innovative and inspiring teacher.

What does it involve?

You'll explore models of teaching and the many ways in which children learn and become fully qualified to teach in one year.

Choose either 3-7 years, 5-11 years or 7-11 years with the option to specialise in Arts, English, English as an Additional Language, Maths, Modern Languages, Physical Education, Science or Special Educational Needs and Disabilities for 5-11 and 7-11 years.

Our Teacher Training programmes are underpinned by our four core principles: creativity, collaboration, critical thinking and care, to ensure you make a difference to the lives and futures of the children and young people you teach.

With over 75 years experience training teachers, you're in good hands. We offer a mix of university-based and school-based learning. You'll receive training in at least two schools or settings, making up roughly two thirds of your time, allowing you to become familiar with their ethos and practice. An assigned training mentor in school, and academic tutor, will help you to develop your teaching skills through practice and reflection.

Where will it take you?

This PGCE programme produces high calibre teachers with the relevant skills, knowledge, understanding and experiences necessary to enter a career in teaching.

“The PGCE course provides the ultimate teaching package - subject experts to impart their wisdom, placements in a variety of schools across the region, and even the opportunity to perform Shakespeare and sing in a gospel choir!”

Edward Powe,
PGCE Primary and Early Years graduate



Primary and Early Years

Secondary

Location

Sion Hill

Length

One year full-time

Entry month

September 2025



[View this course](#)

View secondary subjects:

[PGCE Secondary Art and Design](#)

[PGCE Secondary Business Studies](#)

[PGCE Secondary Computing](#)

[PGCE Secondary Design and Technology](#)

[PGCE Secondary Drama](#)

Co-created with our partner schools to meet their needs, what you learn will place you in an excellent position for future employment. You'll become a passionate, empathetic and skilled teacher of your chosen secondary subject from the very beginning of your course.

What does it involve?

You'll explore the fundamentals of teaching through an integrated programme that encompasses both university and school-based training. We'll help you to become a knowledgeable and resilient education professional, who has developed your own resources, techniques and individual teaching style.

Our Teacher Training programmes are underpinned by our four core principles: creativity, collaboration, critical thinking and care, to ensure you make a difference to the lives and futures of the children and young people you teach.

With over 75 years experience training teachers, you're in good hands. We offer a mix of university-based and school-based learning. You'll receive training in at least two schools or settings, making up roughly two thirds of your time, allowing you to become familiar with their ethos and practice. An assigned training mentor in school, and academic tutor, will help you to develop your teaching skills through practice and reflection.

Our Secondary Subjects

PGCE Secondary Art and Design

Ignite your pupils' creative spark by becoming a teacher of art, design and craft. You'll learn core teaching skills while developing your confidence and abilities as a teacher at Secondary level. During your university phase of study, you'll use our dedicated art and design spaces for workshops and seminars.

PGCE Secondary Business Studies

Innovation is at the heart of this course, from exploring the ways in which children learn today to developing your own ICT skills and using software creatively. You'll gain the wide-ranging knowledge and planning skills needed to become a motivating, innovative business studies teacher.

PGCE Secondary Computing

Train to teach a subject that truly reflects the digital age in which we live. Not only is it a key curriculum subject in all schools, it's an essential life skill. Ignite your pupils' passion for digital technology and become an empathetic and skilled teaching professional.

PGCE Secondary Design and Technology

Equip yourself with the creative skills and practical knowledge to teach different aspects of design and technology. You'll learn how to foster critical-thinking and problem-solving skills in children, and how to guide these skills towards creative, design-based solutions.

PGCE Secondary Drama

Learn how to foster students' passion for performance and self-expression. You'll blend the practical theatre skills from your undergraduate study with the academic theory of teaching, and cultivate creativity, confidence, and collaboration abilities among the students in your classroom.

Subjects continued on the next page.



Secondary



Secondary

Location

Sion Hill

Length

One year full-time

Entry month

September 2025



[View this course](#)

View secondary subjects:

[PGCE Secondary English](#)

[PGCE Secondary Geography](#)

[PGCE Secondary History](#)

[PGCE Secondary Mathematics](#)

[PGCE Secondary Modern Languages](#)

[PGCE Secondary Music](#)

[PGCE Secondary Physical Education](#)

[PGCE Secondary Religious Education](#)

[PGCE Secondary Science \(Biology, Chemistry or Physics\)](#)

PGCE Secondary English

Teach one of the most essential parts of the curriculum and make a difference to pupils' lives. You'll engage with research and professionals to become an enthusiastic, capable teacher who can develop strategies to help pupils overcome barriers to learning English.

PGCE Secondary Geography

Help students to understand the world around them by becoming an inspirational, engaging geography teacher. You'll discover how to help pupils engage with the world through physical and human geography, and how to explore environmental and global issues with a critical thinking approach.

PGCE Secondary History

Excite and engage your students to become independent learners of history. During your university phase of study, you'll engage with history workshops led by the British Museum, National Archives and Holocaust Educational Trust, as well as participating in museum-based teaching sessions – modelling various ways to instil a love of history.

PGCE Secondary Mathematics

Learn how to create a positive and supportive Mathematics classroom and develop strategies to help pupils overcome barriers to learning Maths. You'll inspire, engage and motivate your students to become excited and challenged by the possibilities that Maths brings.

PGCE Secondary Modern Languages

Instil a love of learning in modern languages (French, German and Spanish). You'll learn how to draw on authentic resources to promote curiosity about other cultures, how to teach in the target language, and how to use activities to promote collaboration, discussion and communication.

PGCE Secondary Music

You'll learn how to plan effective sessions, using clear learning objectives, as well as how to model and adaptively teach key musical skills and concepts to your students. As an inspirational music teacher, you'll help guide students to make musical progress both within and beyond the classroom.

PGCE Secondary Physical Education

Through a combination of practical and theoretical sessions, we'll develop your confidence and competence as an effective, compassionate and adaptable physical educator. You'll graduate as a versatile teacher, able to tailor the curriculum to young people's needs.

PGCE Secondary Religious Education

This course takes an open and exploratory approach that's designed to fully prepare you for teaching. You'll explore fundamental questions about Religion and Worldviews, helping your students understand the world and their place in it.

PGCE Secondary Science (Biology, Chemistry or Physics)

Inspire the next generation of scientists by becoming a qualified science teacher in your chosen pathway. You'll combine all the scientific knowledge from your undergraduate study with the leadership skills to help you succeed as an educator.

Don't have a degree in a subject you want to teach?

Subject Knowledge Enhancement (SKE) courses are perfect for graduates who are interested in teaching a particular subject at secondary level, but who don't have a degree in that subject. These take place before the teacher training programme starts. Each course is designed to help you spot any gaps and top up your subject knowledge so that you're fully prepared for your programme of choice.



Secondary



WRITING, PUBLISHING AND HUMANITIES

From environmental humanities to creative writing, make sense of the world and our interactions within it. Explore the diversity of the human experience through our compelling Master's courses.

- Children's Publishing
- Creative Writing
- Heritage Management
- Nature and Travel Writing
- Scriptwriting
- Writing for Young People

Children's Publishing

Location

Newton Park

Length

One year full-time or two years part-time

Entry month

September 2025



[View this course](#)

Immerse yourself in the world of children's publishing on this innovative, industry-focused course.

What does it involve?

Our MA in Children's Publishing is the first of its kind. Covering all aspects of the industry, including editorial, sales and marketing, rights and contracts, and design and production, you'll graduate with all the skills and expertise you need to mark your mark on this internationally successful, high growth area of publishing. You'll learn to create a wide range of print and digital publications, from picture books to apps, using the Adobe Creative Suite in our industry-standard computer labs. We offer a distinctive creative digital-tech approach, drawing on our expertise in both digital and print publishing.

During your studies, there will also be opportunities to learn through industry events and experiences, and we'll support you with applying for paid internships and work experience with industry partners.

Designed to offer flexibility, you'll tailor your coursework and final industry project around your interests and ambitions, and you'll graduate with a stunning professional portfolio to showcase your talent.

Where will it take you?

Completion of this course will prepare you for a wide range of roles within the industry such as editorial, design and production, sales, marketing and publicity, digital content development, merchandising and education. You might also set up your own businesses or continue your studies at PhD level.

Throughout your Master's, you'll receive expert advice on developing an appropriate industry CV to accompany your digital portfolio, as well as specialist publishing careers advice.

"My favourite thing about MA Children's Publishing was how much freedom I had to specialise in and explore the topics that interested me (design and illustration). I had the support and structure to complete projects I was passionate about and push my abilities to an industry standard. I graduated feeling proud of my portfolio and prepared for my future in publishing!"

Milly Forbes,
MA Children's Publishing graduate, now Designer at Curious Universe UK



Creative Writing

Location

Newton Park

Length

One year full-time or two years part-time

Entry month

September 2025



[View this course](#)

This course will help you to bring a novel, book of poems, book of short stories or work of non-fiction as near to publishable quality as possible.

What does it involve?

Working with tutors and other writers on the course, you'll develop your writing and build up a substantial body of work. Weekly workshops are taught by a strong team of published writers, and there are regular visits by literary agents, publishers, magazine editors and broadcasters, as well as other writers.

Due to the reputation of the MA in Creative Writing, we are able to recruit excellent students who form an exciting and mutually supportive community of writers every year.

Where will it take you?

Students and alumni have been successful in gaining excellent publishing contracts for novels, works of non-fiction, poetry collections and story collections, and in placing poems and stories in magazines and on broadcast media.

Literary agents sign students as clients every year. Recent successes by our graduates include the Costa Prize, the Windham Campbell Prize, the Bridport Prize, the Hawthornden Prize, the Desmond Elliott Prize and the Branford Boase Award.



Heritage Management

Location

Newton Park

Length

One year full-time or two years part-time

Entry month

September 2025



[View this course](#)

This dynamic course explores management of heritage sites in the modern day, from challenges faced to the ever-changing landscape and current debates in the sector, all with the UNESCO World Heritage city of Bath on your doorstep.

What does it involve?

The physical remains of our past and the intangible associations of tradition, language and memory continue to shape our lives. You'll explore how heritage sites are managed, presented and explained. We'll teach you to consider their value beyond something to see or a place to visit, and challenge you to think about what heritage means, help you to set heritage management in its social, political and economic context, and give you the chance to apply your understanding through a range of research and practice-based projects with our partners.

Where will it take you?

You'll learn a range of skills and be perfectly positioned to enter the voluntary sector, social enterprises, fundraising, and a wide range of administrative and management roles. Some of our graduates also go on to complete postgraduate research, and we have a growing cohort of PhD students working in the field of heritage studies.

“I think it is safe to say that I owed my job with English Heritage to the experiences I gained during my MA.”

Anneka Harris,
MA Heritage Management graduate



Heritage Management



Nature and Travel Writing

Location

Low residency

Length

Two years part-time

Entry month

September 2025



View this course

For any writer inspired by places, people and wildlife, with ambition to be published. This MA course provides context of the history, background, and genres of nature and travel writing over time, and helps you focus on getting your writing published.

What does it involve?

With a focus on learning to write from your own experience in the field, you'll develop your writing skills and techniques, learn from established writers, and examine the history, context and genres of travel and nature writing.

Over two years of mainly evening sessions, you'll be immersed in the world of great nature and travel writing, with talks from top authors and editors, seminars from our seasoned tutors, creative friendships with your peers and an exploration of both the classics and the cutting edge in our genres.

You'll gain an understanding of issues and approaches to the representations of peoples, other species, habitats, places, cultures and environments in various kinds of writing. By meeting writers, editors, agents and publishers, you'll gain an insight into the professional skills required to get your writing published.

Taught remotely over two years, you can be based wherever you wish, so you can pursue your academic work while maintaining your current lifestyle.

Where will it take you?

You'll take your existing experience and skills to the next level, expanding your knowledge and exploring the genre to create a portfolio of writing that will enable you to make a career in the sector.

A highlight of the course is our practical approach to becoming a working writer. This includes making pitches to newspapers and magazines, based on an independent field trip which you will make in order to experience writing on the road.

“Unconventional is my style and learning in this hybrid manner enables me to embrace this. I can be adventurous and not worry about getting to a physical classroom.”

Jennifer Ratcliffe,
MA Nature and Travel Writing student



Nature and Travel Writing



Scriptwriting

Location

Newton Park

Length

One year full-time or two years part-time

Entry month

September 2025



[View this course](#)

Develop your scriptwriting to the highest level and tailor your work to different types of media on this practical and collaborative course.

What does it involve?

With a combination of expert guidance and peer-group workshopping, you'll develop your unique voice as you learn to meet the demands of a highly competitive industry and take your writing to the next level. You'll become a more adept scriptwriter, able to work across theatre, radio and film.

Creative collaboration forms the heart of the course. With access to campus resources such as professional recording equipment and television studios, you'll collaborate with acting, directing and film-making students to make your writing into reality, strengthening your craft while providing finished pieces for your portfolio to showcase your development.

Where will it take you?

Our course provides a foundation in writing for all major media. Graduates can find employment in numerous capacities within the industry, working as: researchers, location managers, publicity managers, literary agents, script and story editors and, of course, as scriptwriters.

Many graduates find teams with whom to produce independent work in film and theatre, taking their productions to regional theatres and film festivals.



Scriptwriting

Writing for Young People

Location

Newton Park or distance learning

Length

One year full-time or two years part-time

Entry month

September 2025



[View this course](#)

A specialist creative writing MA for writers for children and young adults, taught by published authors.

What does it involve?

This specialist creative writing MA is designed for writers for children, teenagers and young adults who aim to complete a novel, series of picture books or shorter stories for young children. Taught by published writers for children and young people and by publishing professionals, this practical course will help you refine your craft while learning about the interaction of creative and business considerations in the modern publishing industry.

This course is available both on campus and online so you can work in the way that suits you best.

Where will it take you?

Graduates have achieved publication deals with a range of different mainstream and smaller publishers, while many more have secured literary agents.

Our graduates also go into editing (freelance and at a publishing house), agenting, rights, marketing, publicity, sales, events management and teaching. They have careers in journalism, writing for magazines, teaching, various aspects of publishing, and television.

“I recommend Bath Spa because it is a community that fosters, challenges, and grows writers into authors - and in one of the most beautiful places in the world.”

Alyssa Hollingsworth,
MA Writing for Young People graduate



NEXT STEPS



BOOK AN OPEN DAY

Book an open day. Experience Bath Spa University for yourself at a Postgraduate or Teacher Training Open Day.



TAKE A VIRTUAL TOUR

Explore our campuses from home with our virtual tour



APPLY

Find out more about applying for a taught, research or PGCE course.

KEEP IN TOUCH

Follow our social media channels to see what we're up to.



bath.spa.university



bathspauniversity



bathspauni



bathspauniversity



bathspauni

Published November 2024

This is intended as a general guide to the postgraduate courses that Bath Spa University intends to run for students starting in the academic year 2025/26. Bath Spa University has made every effort to ensure that the information provided is helpful and accurate at the date of publication. However some changes, for example to courses, facilities or fees, may become necessary due to legitimate staffing, financial, regulatory and academic reasons. Bath Spa University will endeavour to keep any changes to a minimum.

Before making an application, it is particularly important that you check the website (www.bathspa.ac.uk) for the most up-to-date information. As a condition of enrolment all students will be required to abide by the policies and regulations of the university.

